

LEA Name : Morrisville Borough SD
Address : 550 W Palmer St
Morrisville , PA 19067

County : Bucks
AUN Number : 122097203
LEA Type : SD

Annual Financial Report Accuracy Certification Statement

For Fiscal Year Ending

6/30/2019

Pennsylvania Department of Education

&

Office of Comptroller Operations

PDE-2056: Intermediate Unit

PDE-2057: School District, AVTS/CTC, Charter School,
and Special Program Jointure

CERTIFICATION: By signing this page I agree that the electronic data submitted is a complete and accurate statement of the financial operations and status of the local education agency for the fiscal year. It has been prepared in accordance with generally accepted accounting principles and established Commonwealth of PA reporting guidelines.



Chief School Administrator Signature


Board Secretary Signature

12/3/2019

Date
12/3/2019

Date

ROBERT BRUCHAK

Contact Person

RBRUCHAK@MV.ORG

Contact Person E-mail Address

(215)736-5932

Ext :

Contact Person Telephone Number

Contact Person Fax Number

Audit Certification
Annual Financial Report:
For Fiscal Year Ending **6/30/2019**
(Pursuant to PA School Code Section 218(b))

LEA Name : Morrisville Borough SD
AUN Number : 122097203
County : Bucks

| |
|---|
| Audit Certification Due: 12/31/2019 |
|---|

This certification is applicable to the Annual Financial Report data submitted through the Consolidated Financial Reporting System on: 12/3/2019
Date

Auditing Firm:

BBD, LLP
1835 Market Street
Philadelphia, PA 19103

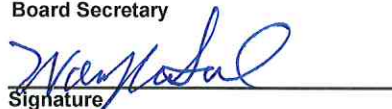
CERTIFICATION: By signing this page I agree that the financial statements of the school have been properly audited as noted above pursuant to Article XXIV, and in the auditor's professional opinion, the Annual Financial Report (PDE-2057) submitted on the date referenced is materially consistent with the audited financial statements.

Chief School Administrator


Signature

12/3/2019
Date

Board Secretary


Signature

12/3/2019
Date

ROBERT BRUCHAK

Contact Person

RBRUCHAK@MV.ORG

Contact Person E-mail Address

(215)736-5932

Ext :

Contact Person Telephone Number

215-736-5370

Contact Person Fax Number

MORRISVILLE BOROUGH SCHOOL DISTRICT

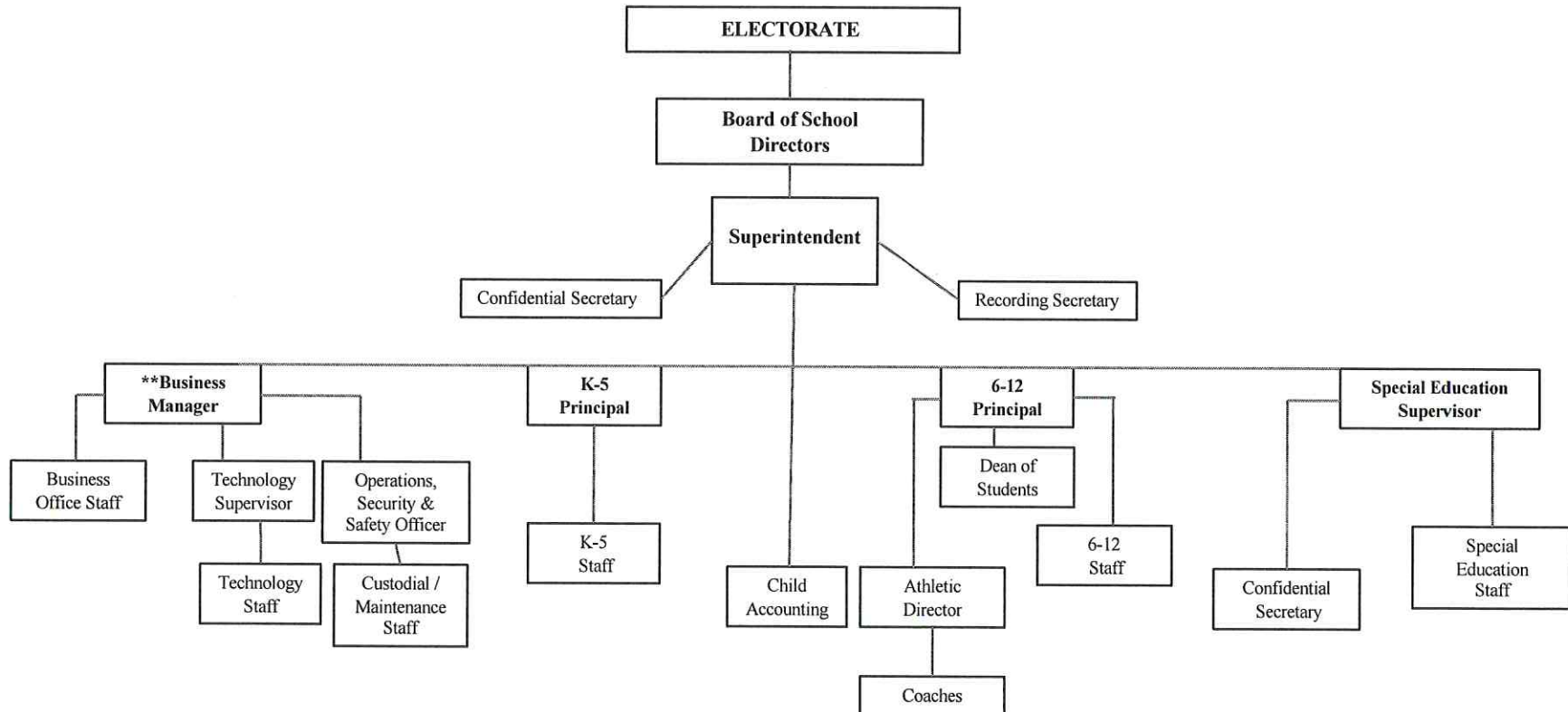
No. 008

SECTION: LOCAL BOARD PROCEDURES

TITLE: ORGANIZATION CHART

ADOPTED: MAY 24, 2017

REVISED: OCTOBER 10, 2018



| Val Number | Description | Justification |
|------------|--|--|
| 42420 | <p>Expenditure Detail: Total current year 2700-513 expenditure varies from prior year by 10%. Correct the data or enter a justification.</p> <p>2700-513, AFR Exp Detail: \$58,526.00 2700-513, PY AFR Amount: \$49,219.00</p> | <p>INCREASE IN TRANSPORTATION COSTS IN THE CURRENT YEAR.</p> |
| 50410 | <p>SESS - 2140 Psychological Services: SESS Schedule amounts for Special Education vary from prior year by 40% or more. Correct the data or enter a justification.</p> <p>SESS Schedule 2140: \$40,467.00 Prior Year SESS Schedule 2140: \$24,617.00</p> | <p>INCREASE IN THE COST OF SALARIES, BENEFITS AND PROFESSIONAL SERVICES RELATED TO PSYCHOLOGICAL SERVICES.</p> |
| 50440 | <p>SESS - 2260 Instruction and Curriculum Development Services: SESS Schedule amounts for Special Education vary from prior year by 40% or more. Correct the data or enter a justification.</p> <p>SESS Schedule 2260: \$33,490.00 Prior Year SESS Schedule 2260: \$5,386.00</p> | <p>INCREASE IN THE COST OF SALARIES, BENEFITS AND PROFESSIONAL SERVICES.</p> |
| 50460 | <p>SESS - 2420 Medical Services: SESS Schedule amounts for Special Education vary from prior year by 40% or more. Correct the data or enter a justification.</p> <p>SESS Schedule 2420: \$27,572.00 Prior Year SESS Schedule 2420: \$1,067.00</p> | <p>INCREASE IN THE COST OF MEDICAL PROFESSIONAL AND TECHNICAL SERVICES IN THE CURRENT YEAR</p> |

LEA : 122097203 Morrisville Borough SD

Printed 1/27/2020 4:04:44 PM

| Amounts Expressed in Whole Dollars | | <u>General Fund</u> <u>(10)</u> | <u>Public Purpose Trust</u> <u>(27)</u> | <u>Other Compt Approved</u> <u>(28)</u> | <u>Athletic / Activity</u> <u>(29)</u> | <u>Capital Reserve (690.</u> <u>1850)</u> <u>(31)</u> |
|--|--|------------------------------------|--|--|---|---|
| Assets And Deferred Outflows Of Resources | | | | | | |
| Assets | | | | | | |
| 0100 | Cash and Cash Equivalents | 1,668,698 | | | | |
| 0110 | Investments | | | | | |
| 0120 | Taxes Receivable | 436,515 | | | | |
| 0130 | Due From Other Funds | | | | | |
| 0141 | Due From Other Governments | 717,205 | | | | |
| 0142 | State Revenue Receivable | | | | | |
| 0143 | Federal Revenue Receivable | | | | | |
| 0145 | Other Intergovernmental Revenue Receivable | | | | | |
| 0146 | Due from Primary Government | | | | | |
| 0147 | Due from Component Unit | | | | | |
| 0150 | Other Receivables | 53,194 | | | | |
| 0170 | Inventories | | | | | |
| 0180 | Prepaid Expenses (Expenditures) | | | | | |
| 0190 | Other Current Assets | | | | | |
| Total Assets | | \$2,875,612 | | | | |
| 0910 | Deferred Outflows of Resources | | | | | |
| Total Assets And Deferred Outflows Of Resources | | \$2,875,612 | | | | |

LEA : 122097203 Morrisville Borough SD

Printed 1/27/2020 4:04:44 PM

| Amounts Expressed in Whole Dollars | | <u>Capital Reserve (1431</u> <u>(32)</u> | <u>Other Capital Projects</u> <u>Fund</u> <u>(39)</u> | <u>Debt Service</u> <u>(40)</u> | <u>Permanent</u> <u>(90)</u> | <u>Total Governmental</u> <u>Funds</u> |
|--|--|---|---|------------------------------------|---------------------------------|---|
| Assets And Deferred Outflows Of Resources | | | | | | |
| Assets | | | | | | |
| 0100 | Cash and Cash Equivalents | 1,074 | 4,449,576 | | | 6,119,348 |
| 0110 | Investments | | | | | |
| 0120 | Taxes Receivable | | | | | 436,515 |
| 0130 | Due From Other Funds | | | | | |
| 0141 | Due From Other Governments | | | | | 717,205 |
| 0142 | State Revenue Receivable | | | | | |
| 0143 | Federal Revenue Receivable | | | | | |
| 0145 | Other Intergovernmental Revenue Receivable | | | | | |
| 0146 | Due from Primary Government | | | | | |
| 0147 | Due from Component Unit | | | | | |
| 0150 | Other Receivables | | | | | 53,194 |
| 0170 | Inventories | | | | | |
| 0180 | Prepaid Expenses (Expenditures) | | | | | |
| 0190 | Other Current Assets | | | | | |
| Total Assets | | \$1,074 | \$4,449,576 | | | \$7,326,262 |
| 0910 | Deferred Outflows of Resources | | | | | |
| Total Assets And Deferred Outflows Of Resources | | \$1,074 | \$4,449,576 | | | \$7,326,262 |

LEA : 122097203 Morrisville Borough SD

Printed 1/27/2020 4:04:44 PM

| Amounts Expressed in Whole Dollars | | <u>General Fund</u> <u>(10)</u> | <u>Public Purpose Trust</u> <u>(27)</u> | <u>Other Compt Approved</u> <u>(28)</u> | <u>Athletic / Activity</u> <u>(29)</u> | <u>Capital Reserve (690.</u> <u>1850)</u> <u>(31)</u> |
|---|------------------------------------|------------------------------------|--|--|---|---|
| Liabilities And Deferred Inflows Of Resources And Fund Balances | | | | | | |
| Liabilities | | | | | | |
| 0400 | Due to Other Funds | | | | | |
| 0411 | Due to Other Governments | | | | | |
| 0412 | Due to Primary Government | | | | | |
| 0413 | Due to Component Unit | | | | | |
| 0420 | Accounts Payable | 624,382 | | | | |
| 0430 | Contracts Payable | | | | | |
| 0440 | Current Portion of Long-Term Debt | | | | | |
| 0450 | Short-Term Payables | | | | | |
| 0461 | Accrued Salaries and Benefits | 1,934,513 | | | | |
| 0462 | Payroll Deductions and Withholding | | | | | |
| 0480 | Unearned Revenues | | | | | |
| 0490 | Other Current Liabilities | 14,262 | | | | |
| Total Liabilities | | \$2,573,157 | | | | |
| 0950 | Deferred Inflows of Resources | 377,563 | | | | |
| Fund Balances | | | | | | |
| 0810 | Nonspendable Fund Balance | | | | | |
| 0820 | Restricted Fund Balance | | | | | |
| 0830 | Committed Fund Balance | | | | | |
| 0840 | Assigned Fund Balance | | | | | |
| 0850 | Unassigned Fund Balance | (75,108) | | | | |
| Total Fund Balances | | (\$75,108) | | | | |
| Total Liabilities, Deferred Inflows Of Resources And Fund Balances | | \$2,875,612 | | | | |

LEA : 122097203 Morrisville Borough SD

Printed 1/27/2020 4:04:44 PM

| Amounts Expressed in Whole Dollars | | <u>Capital Reserve (1431)</u> <u>(32)</u> | <u>Other Capital Projects</u> <u>Fund</u> <u>(39)</u> | <u>Debt Service</u> <u>(40)</u> | <u>Permanent</u> <u>(90)</u> | <u>Total Governmental</u> <u>Funds</u> |
|---|------------------------------------|--|---|------------------------------------|---------------------------------|---|
| Liabilities And Deferred Inflows Of Resources And Fund Balances | | | | | | |
| Liabilities | | | | | | |
| 0400 | Due to Other Funds | | | | | |
| 0411 | Due to Other Governments | | | | | |
| 0412 | Due to Primary Government | | | | | |
| 0413 | Due to Component Unit | | | | | |
| 0420 | Accounts Payable | | 1,059,035 | | | 1,683,417 |
| 0430 | Contracts Payable | | | | | |
| 0440 | Current Portion of Long-Term Debt | | | | | |
| 0450 | Short-Term Payables | | | | | |
| 0461 | Accrued Salaries and Benefits | | | | | 1,934,513 |
| 0462 | Payroll Deductions and Withholding | | | | | |
| 0480 | Unearned Revenues | | | | | |
| 0490 | Other Current Liabilities | | | | | 14,262 |
| Total Liabilities | | | \$1,059,035 | | | \$3,632,192 |
| 0950 | Deferred Inflows of Resources | | | | | 377,563 |
| Fund Balances | | | | | | |
| 0810 | Nonspendable Fund Balance | | | | | |
| 0820 | Restricted Fund Balance | 1,074 | 3,390,541 | | | 3,391,615 |
| 0830 | Committed Fund Balance | | | | | |
| 0840 | Assigned Fund Balance | | | | | |
| 0850 | Unassigned Fund Balance | | | | | (75,108) |
| Total Fund Balances | | \$1,074 | \$3,390,541 | | | \$3,316,507 |
| Total Liabilities, Deferred Inflows Of Resources And Fund Balances | | \$1,074 | \$4,449,576 | | | \$7,326,262 |

| Amounts Expressed in Whole Dollars | General Fund (10) | Public Purpose Trust (27) | Other Compt Approved (28) | Athletic / Activity (29) | Capital Reserve (690. 1850) (31) |
|--|----------------------|------------------------------|------------------------------|-----------------------------|--|
| Revenues | | | | | |
| 6000 Revenue from Local Sources | 13,463,638 | | | | |
| 7000 Revenue from State Sources | 7,200,416 | | | | |
| 8000 Revenue from Federal Sources | 1,503,389 | | | | |
| Total Revenues | \$22,167,443 | | | | |
| Expenditures | | | | | |
| 1000 Instruction | 15,417,133 | | | | |
| 2000 Support Services | 6,085,816 | | | | |
| 3000 Operation of Non-Instructional Services | 472,272 | | | | |
| 4000 Facilities Acquisition, Construction and Improvement Services | | | | | |
| 5110 Debt Service | 953,773 | | | | |
| 5130 Refund of Prior Year Revenues / Receipts | | | | | |
| Total Expenditures | \$22,928,994 | | | | |
| Excess (Deficiency) Of Revenues Over Expenditures | (\$761,551) | | | | |
| Other Financing Sources (Uses) | | | | | |
| 9110 Face Value of Bonds Issued | | | | | |
| 9120 Proceeds from Refunding of Bonds | | | | | |
| 9130 Bond Premiums | | | | | |
| 9200 Proceeds from Extended-Term Financing | | | | | |
| 9300 Interfund Transfers - IN | | | | | |
| 9400 Sale of or Compensation for Loss of Fixed Assets | 26,190 | | | | |
| 9710 Transfers from Component Units | | | | | |
| 9720 Transfers from Primary Governments | | | | | |
| 9910 Other Financing Sources Not Listed in the 9000 Series | | | | | |
| 9990 Insurance Recoveries | | | | | |
| 5120 Debt Service – Refunded Bonds | | | | | |
| 5150 Bond Discounts | | | | | |
| 5200 Interfund Transfers – Out | 150,000 | | | | |
| 5300 Transfers Out to Component Units/Primary Governments | | | | | |
| Total Other Financing Sources (Uses) | (\$123,810) | | | | |

LEA : 122097203 Morrisville Borough SD

Printed 1/27/2020 4:04:49 PM

| Amounts Expressed in Whole Dollars | Capital Reserve (1431) (32) | Other Capital Projects Fund (39) | Debt Service (40) | Permanent (90) | Total Governmental Funds |
|--|--------------------------------|--|----------------------|-------------------|-----------------------------|
| Revenues | | | | | |
| 6000 Revenue from Local Sources | 1,522 | 130,887 | | | 13,596,047 |
| 7000 Revenue from State Sources | | | | | 7,200,416 |
| 8000 Revenue from Federal Sources | | | | | 1,503,389 |
| Total Revenues | \$1,522 | \$130,887 | | | \$22,299,852 |
| Expenditures | | | | | |
| 1000 Instruction | | | | | 15,417,133 |
| 2000 Support Services | 339,657 | 17,287 | | | 6,442,760 |
| 3000 Operation of Non-Instructional Services | | | | | 472,272 |
| 4000 Facilities Acquisition, Construction and Improvement Services | | 2,914,157 | | | 2,914,157 |
| 5110 Debt Service | | 107,419 | | | 1,061,192 |
| 5130 Refund of Prior Year Revenues / Receipts | | | | | |
| Total Expenditures | \$339,657 | \$3,038,863 | | | \$26,307,514 |
| Excess (Deficiency) Of Revenues Over Expenditures | (\$338,135) | (\$2,907,976) | | | (\$4,007,662) |
| Other Financing Sources (Uses) | | | | | |
| 9110 Face Value of Bonds Issued | | | | | |
| 9120 Proceeds from Refunding of Bonds | | | | | |
| 9130 Bond Premiums | | | | | |
| 9200 Proceeds from Extended-Term Financing | | | | | |
| 9300 Interfund Transfers - IN | 150,000 | | | | 150,000 |
| 9400 Sale of or Compensation for Loss of Fixed Assets | | | | | 26,190 |
| 9710 Transfers from Component Units | | | | | |
| 9720 Transfers from Primary Governments | | | | | |
| 9910 Other Financing Sources Not Listed in the 9000 Series | | | | | |
| 9990 Insurance Recoveries | | | | | |
| 5120 Debt Service – Refunded Bonds | | | | | |
| 5150 Bond Discounts | | | | | |
| 5200 Interfund Transfers – Out | | | | | 150,000 |
| 5300 Transfers Out to Component Units/Primary Governments | | | | | |
| Total Other Financing Sources (Uses) | \$150,000 | | | | \$26,190 |

| Amounts Expressed in Whole Dollars | | <u>General Fund</u> <u>(10)</u> | <u>Public Purpose Trust</u> <u>(27)</u> | <u>Other Compt Approved</u> <u>(28)</u> | <u>Athletic / Activity</u> <u>(29)</u> | <u>Capital Reserve</u> <u>(690.</u> <u>1850)</u> <u>(31)</u> |
|--|---|------------------------------------|--|--|---|--|
| Special And Extraordinary Items | | | | | | |
| 9920 | Special Items – Gains | | | | | |
| 9930 | Extraordinary Items – Gains | | | | | |
| 5520 | Special Items – Losses | | | | | |
| 5530 | Extraordinary Items – Losses | | | | | |
| Net Change In Fund Balances | | (\$885,361) | | | | |
| Fund Balance | | | | | | |
| 0001 | Fund Balance - Beginning of Fiscal Year | 810,253 | | | | |
| Fund Balance - End Of Year | | (\$75,108) | | | | |

| Amounts Expressed in Whole Dollars | | <u>Capital Reserve (1431</u> <u>(32)</u> | <u>Other Capital Projects</u> <u>Fund</u> <u>(39)</u> | <u>Debt Service</u> <u>(40)</u> | <u>Permanent</u> <u>(90)</u> | <u>Total Governmental</u> <u>Funds</u> |
|--|--|---|---|------------------------------------|---------------------------------|---|
| Special And Extraordinary Items | | | | | | |
| 9920 Special Items – Gains | | | | | | |
| 9930 Extraordinary Items – Gains | | | | | | |
| 5520 Special Items – Losses | | | | | | |
| 5530 Extraordinary Items – Losses | | | | | | |
| Net Change In Fund Balances | | (\$188,135) | (\$2,907,976) | | | (\$3,981,472) |
| Fund Balance | | | | | | |
| 0001 Fund Balance - Beginning of Fiscal Year | | 189,209 | 6,298,517 | | | 7,297,979 |
| Fund Balance - End Of Year | | \$1,074 | \$3,390,541 | | | \$3,316,507 |

LEA : 122097203 Morrisville Borough SD

Printed 1/27/2020 4:04:53 PM

| Amounts Expressed in Whole Dollars | Food Service (51) | Child Care Operations (52) | Other Enterprise (58) | TOTAL | Internal Service (60) |
|--|----------------------|----------------------------------|--------------------------|------------------|--------------------------|
| Assets And Deferred Outflows Of Resources | | | | | |
| Current Assets | | | | | |
| 0100 Cash and Cash Equivalents | 74,578 | | | 74,578 | |
| 0110 Investments | | | | | |
| 0130 Due From Other Funds | | | | | |
| 0141 Due From Other Governments | 55,002 | | | 55,002 | |
| 0142 State Revenue Receivable | | | | | |
| 0143 Federal Revenue Receivable | | | | | |
| 0146 Due from Primary Government | | | | | |
| 0147 Due from Component Unit | | | | | |
| 0150 Other Receivables | | | | | |
| 0170 Inventories | 5,440 | | | 5,440 | |
| 0180 Prepaid Expenses (Expenditures) | | | | | 255,073 |
| 0190 Other Current Assets | | | | | |
| Total Current Assets | \$135,020 | | | \$135,020 | \$255,073 |
| Noncurrent Assets | | | | | |
| 0211 Land | | | | | |
| 0212 Site Improvements (Net) | | | | | |
| 0220 Buildings and Building Improvements (Net) | | | | | |
| 0230 Machinery, Equipment and Furniture (Net) | 7,862 | | | 7,862 | |
| 0250 Construction in Progress | | | | | |
| 0260 Long Term Prepayments | | | | | |
| 0290 Other Noncurrent Assets | | | | | |
| Total Noncurrent Assets | \$7,862 | | | \$7,862 | |
| 0910 Deferred Outflows of Resources | | | | | |
| Total Assets And Deferred Outflows Of Resources | \$142,882 | | | \$142,882 | \$255,073 |

| Amounts Expressed in Whole Dollars | <u>Food Service</u> (51) | <u>Child Care</u> <u>Operations</u> (52) | <u>Other Enterprise</u> (58) | <u>TOTAL</u> | <u>Internal Service</u> (60) |
|---|-----------------------------|--|---------------------------------|------------------|---------------------------------|
| Liabilities And Deferred Inflows Of Resources And Net Position | | | | | |
| Current Liabilities | | | | | |
| 0400 Due to Other Funds | | | | | |
| 0411 Due to Other Governments | | | | | |
| 0413 Due to Component Unit | | | | | |
| 0420 Accounts Payable | 112,138 | | | 112,138 | |
| 0430 Contracts Payable | | | | | |
| 0440 Current Portion of Long-Term Debt | | | | | |
| 0450 Short-Term Payables | | | | | |
| 0461 Accrued Salaries and Benefits | | | | | |
| 0462 Payroll Deductions and Withholding | | | | | |
| 0480 Unearned Revenues | | | | | |
| 0490 Other Current Liabilities | | | | | |
| Total Current Liabilities | \$112,138 | | | \$112,138 | |
| Noncurrent Liabilities | | | | | |
| 0510 Bonds Payable | | | | | |
| 0520 Extended-Term Financing Agreements Payable | | | | | |
| 0530 Lease-Purchase Obligations | | | | | |
| 0540 Accumulated Compensated Absences | | | | | |
| 0550 Authority Lease Obligations | | | | | |
| 0560 Other Post-Employment Benefits (OPEB) | | | | | |
| 0570 Net Pension Liability | | | | | |
| 0599 Other Noncurrent Liabilities | | | | | |
| Total Noncurrent Liabilities | | | | | |
| Total Liabilities | \$112,138 | | | \$112,138 | |
| 0950 Deferred Inflows of Resources | | | | | |
| Net Position | | | | | |
| 0791 Net Investment in Capital Assets | 7,862 | | | 7,862 | |
| 0008 Restricted Net Position (0792 – 0798) | | | | | |
| 0799 Unrestricted Net Position | 22,882 | | | 22,882 | 255,073 |
| Total Net Position | \$30,744 | | | \$30,744 | \$255,073 |
| Total Liabilities And Deferred Inflows Of Resources And Net Position | \$142,882 | | | \$142,882 | \$255,073 |

| Amounts Expressed in Whole Dollars | <u>Food Service</u> <u>(51)</u> | <u>Child Care Operations</u> <u>(52)</u> | <u>Other Enterprise</u> <u>(58)</u> | <u>TOTAL</u> | <u>Internal Service</u> <u>(60)</u> |
|---|------------------------------------|---|--|--------------------|--|
| Operating Revenues | | | | | |
| 6600 Food Service Revenue | 107,924 | | | 107,924 | |
| 0071 Charges for Services | | | | | |
| 0072 Other Operating Revenue | | | | | 1,137,125 |
| Total Operating Revenues | \$107,924 | | | \$107,924 | \$1,137,125 |
| Operating Expenses | | | | | |
| 100 Personnel Services – Salaries | | | | | |
| 200 Personnel Services – Employee Benefits | | | | | 1,112,193 |
| 300 Purchased Professional and Technical Services | | | | | |
| 400 Purchased Property Services | | | | | |
| 500 Other Purchased Services | 272,616 | | | 272,616 | |
| 600 Supplies | 192,740 | | | 192,740 | |
| 740 Depreciation | 2,203 | | | 2,203 | |
| 810 Dues and Fees | 160 | | | 160 | |
| 890 Miscellaneous Expenditures | | | | | |
| Total Operating Expenses | \$467,719 | | | \$467,719 | \$1,112,193 |
| Operating Income (Loss) | (\$359,795) | | | (\$359,795) | \$24,932 |
| Non Operating Revenues (Expenses) | | | | | |
| 6500 Earnings on Investments | | | | | |
| 6920 Contributions and Donations from Private Sources | | | | | |
| 6930 Gains or Losses on Sale of Fixed Assets | | | | | |
| 6991 Refunds of a Prior Year Expenditure | | | | | |
| 7000 Revenue from State Sources | 15,246 | | | 15,246 | |
| 8000 Revenue from Federal Sources | 350,929 | | | 350,929 | |
| 9990 Insurance Recoveries | | | | | |
| 820 Claims and Judgments Against the LEA | | | | | |
| 830 Interest | | | | | |
| TOTAL Non Operating Revenues (Expenses) | \$366,175 | | | \$366,175 | |
| Income (Loss) Before Contributions And Transfers | \$6,380 | | | \$6,380 | \$24,932 |

| Amounts Expressed in Whole Dollars | <u>Food Service</u> <u>(51)</u> | <u>Child Care Operations</u> <u>(52)</u> | <u>Other Enterprise</u> <u>(58)</u> | <u>TOTAL</u> | <u>Internal Service</u> <u>(60)</u> |
|--|------------------------------------|---|--|-----------------|--|
| Contributions, Transfers, and Special and Extraordinary Items | | | | | |
| 5200 Interfund Transfers – Out | | | | | |
| 5300 Transfers Out to Component Units/Primary Governments | | | | | |
| 5520 Special Items – Losses | | | | | |
| 5530 Extraordinary Items – Losses | | | | | |
| 9300 Interfund Transfers - IN | | | | | |
| 9500 Capital Contributions | | | | | |
| 9700 Transfers IN From Component Units/Primary Governments | | | | | |
| 9920 Special Items – Gains | | | | | |
| 9930 Extraordinary Items – Gains | | | | | |
| Change In Net Position | \$6,380 | | | \$6,380 | \$24,932 |
| 0002 Net Position - Beginning of Fiscal Year | 24,364 | | | 24,364 | 230,141 |
| 0003 Accounting Changes / Residual Equity Transfers | | | | | |
| Net Position - End Of Year | \$30,744 | | | \$30,744 | \$255,073 |

LEA : 122097203 Morrisville Borough SD

Printed 1/27/2020 4:05:04 PM

| Amounts Expressed in Whole Dollars | <u>Food Service</u> <u>(51)</u> | <u>Child Care Operations</u> <u>(52)</u> | <u>Other Enterprise</u> <u>(58)</u> | <u>TOTAL</u> | <u>Internal Service(60)</u> |
|---|------------------------------------|---|--|--------------------|-----------------------------|
| Cash Flows From Operating Activities | | | | | |
| 0011 Cash Receipts From Users | 107,924 | | | 107,924 | |
| 0012 Cash Receipts From Assessments Made to Other Funds | | | | | 1,137,125 |
| 0013 Cash Receipts From Earnings on Investments | | | | | |
| 0014 Cash Receipts From Other Operating Revenue | | | | | |
| 0015 Cash Payments To Employees For Services | | | | | |
| 0016 Cash Payments For Insurance Claims | | | | | 1,137,125 |
| 0017 Cash Payments To Suppliers For Goods and Services | | | | | |
| 0018 Cash Payments For Other Operating Expenses | 404,620 | | | 404,620 | |
| Net Cash Provided By (Used For) Operating Activities | (\$296,696) | | | (\$296,696) | \$0 |
| Cash Flows From Non-Capital Financing Activities | | | | | |
| 0021 Receipts From Local Sources - 6000 | | | | | |
| 0022 Receipts From State Sources - 7000 | 15,344 | | | 15,344 | |
| 0023 Receipts From Federal Sources -8000 | 331,530 | | | 331,530 | |
| 0024 Notes and Loans Received (Repaid) | | | | | |
| 0025 Interest Paid on Notes/Loans - 5100-830 | | | | | |
| 0026 Operating Transfers In (Out)/Residual Equity Trans | | | | | |
| 0027 Operating Transfers In (Out) Primary Government / Comp Unit | | | | | |
| 0028 Receipts From Refund of Prior Year Expenditures - 6991 | | | | | |
| 0029 Special and Extraordinary Gains (losses) | | | | | |
| 0030 Receipts from Insurance Recoveries -9990 | | | | | |
| Net Cash Prov By (Used for) Non-Capital Financing Activities | \$346,874 | | | \$346,874 | |
| Cash Flows From Capital and Related Financing Activities | | | | | |
| 0031 Payments For Fac Acq, Const, and Imp - 4000 | | | | | |
| 0032 Gain / (Loss) on Sale of Fixed Assets - 6930 | | | | | |
| 0033 Proceeds From Extended Term Financing - 9200 | | | | | |
| 0034 Principal Paid on Financing Agreements | | | | | |
| 0035 Interest Paid on Financing Agreements - 5100-830 | | | | | |
| 0036 (Inc) Dec in Contributed Capital | | | | | |
| Net Cash Prov By (Used for) Capital and Related Financing Activities | | | | | |
| Cash Flows From Investing Activities | | | | | |
| 0041 Earnings on Investments - 6500 | | | | | |
| 0042 Purchase of Inv Securities / Deposits to Inv Pools | | | | | |
| 0043 Receipts From Investment Pool Withdrawals | | | | | |
| 0044 Proceeds from Sale and Maturity of Inv Securities | | | | | |

LEA : 122097203 Morrisville Borough SD

Printed 1/27/2020 4:05:04 PM

0045 Loans Received (Paid)

Net Cash Prov By (Used for) Investing Activities

LEA : 122097203 Morrisville Borough SD

Printed 1/27/2020 4:05:04 PM

| | Food Service (51) | Child Care Operations (52) | Other Enterprise (58) | TOTAL | Internal Service (60) |
|---|----------------------|-------------------------------|--------------------------|-------------|--------------------------|
| Net Increase (Decrease) in Cash Flows | 50,178 | | | 50,178 | |
| 0004 Cash and Cash Equivalents Beginning of Year | 24,400 | | | 24,400 | |
| Cash and Cash Equivalents at Year End | \$74,578 | | | \$74,578 | |
| | | | | | |
| Reconciliation of Operating Income (Loss) To Net Cash Provided by (Used For) Operating Activities | | | | | |
| 0005 Operating Income (Loss) per REP | (359,795) | | | (359,795) | 24,932 |
| Adjustments | | | | | |
| 0051 Depreciation and Net Amortization | 2,203 | | | 2,203 | |
| 0052 Provision for Uncollectible Accounts | | | | | |
| 0053 Other Adjustments | 19,697 | | | 19,697 | |
| Effect of Changes in Assets, Liabilities, Deferred Outflows and Deferred Inflows | | | | | |
| 0054 (Inc) Dec In Accounts Receivable (0120-0150) | | | | | |
| 0055 Advances to Other Funds (0160) | | | | | |
| 0056 (Inc) Dec in Inventories (0170) | | | | | |
| 0057 (Inc) Dec in Prepaid Expenses (0180) | 1,504 | | | 1,504 | (24,932) |
| 0058 (Inc) Dec in Other Current or Noncurrent Assets | | | | | |
| 0064 Deferred Outflows (0910) | | | | | |
| 0059 Inc (Dec) in Accounts Payable (0400-0450) | 39,695 | | | 39,695 | |
| 0060 Inc (Dec) in Accrued Salaries/Benefits (0461) | | | | | |
| 0065 Inc (Dec) in Net Pension Liabilities (0570) | | | | | |
| 0066 Inc (Dec) in Other Postemp Benefit Oblig (0560) | | | | | |
| 0061 Inc (Dec) in Payroll Deductions/Withholding (0462) | | | | | |
| 0062 Inc (Dec) in Unearned Revenue (0480) | | | | | |
| 0063 Inc (Dec) in Other Current or Noncurrent Liabilities | | | | | |
| 0067 Deferred Inflows (0950) | | | | | |
| Total Adjustments | \$63,099 | | | \$63,099 | (\$24,932) |
| Cash Provided By (Used for) Total | (\$296,696) | | | (\$296,696) | |

COMBINED STATEMENT OF CASH FLOWS
SCHEDULE OF NONCASH INVESTING, CAPITAL, AND FINANCING ACTIVITIES

| Explanation of Transaction and Balance Sheet Effect | Amount |
|---|----------|
| USDA DONATED COMMODITY VALUE | 19,697 |
| Total | \$19,697 |

LEA : 122097203 Morrisville Borough SD

Printed 1/27/2020 4:05:06 PM

| Amounts Expressed in Whole Dollars | <u>Private Purpose Trust</u> <u>(71)</u> | <u>Investment Trust</u> <u>(72)</u> | <u>Pension Trust</u> <u>(73)</u> | <u>Activity</u> <u>(81)</u> |
|--|---|--|-------------------------------------|--------------------------------|
| Assets And Deferred Outflows Of Resources | | | | |
| Assets | | | | |
| 0100 Cash and Cash Equivalents | 23,756 | | | 42,485 |
| 0110 Investments | | | | |
| 0130 Due From Other Funds | | | | |
| 0147 Due from Component Unit | | | | |
| 0150 Other Receivables | | | | |
| 0170 Inventories | | | | |
| 0180 Prepaid Expenses (Expenditures) | | | | |
| 0190 Other Current Assets | | | | |
| 0220 Buildings and Building Improvements (Net) | | | | |
| 0230 Machinery, Equipment and Furniture (Net) | | | | |
| Total Assets | \$23,756 | | | \$42,485 |
| 0910 Deferred Outflows of Resources | | | | |
| Total Assets And Deferred Outflows Of Resources | \$23,756 | | | \$42,485 |

LEA : 122097203 Morrisville Borough SD

Printed 1/27/2020 4:05:06 PM

| Amounts Expressed in Whole Dollars | | <u>Other Agency</u> <u>(89)</u> | <u>Discrete Component Units</u> <u>(98)</u> | <u>Discrete Component Units</u> <u>(99)</u> | <u>Total Fiduciary Funds</u> |
|--|---|------------------------------------|--|--|------------------------------|
| Assets And Deferred Outflows Of Resources | | | | | |
| Assets | | | | | |
| 0100 | Cash and Cash Equivalents | | | | 66,241 |
| 0110 | Investments | | | | |
| 0130 | Due From Other Funds | | | | |
| 0147 | Due from Component Unit | | | | |
| 0150 | Other Receivables | | | | |
| 0170 | Inventories | | | | |
| 0180 | Prepaid Expenses (Expenditures) | | | | |
| 0190 | Other Current Assets | | | | |
| 0220 | Buildings and Building Improvements (Net) | | | | |
| 0230 | Machinery, Equipment and Furniture (Net) | | | | |
| Total Assets | | | | | \$66,241 |
| 0910 | Deferred Outflows of Resources | | | | |
| Total Assets And Deferred Outflows Of Resources | | | | | \$66,241 |

LEA : 122097203 Morrisville Borough SD

Printed 1/27/2020 4:05:06 PM

| Amounts Expressed in Whole Dollars | <u>Private Purpose Trust</u> <u>(71)</u> | <u>Investment Trust</u> <u>(72)</u> | <u>Pension Trust</u> <u>(73)</u> | <u>Activity</u> <u>(81)</u> |
|--|---|--|-------------------------------------|--------------------------------|
| Liabilities, Deferred Inflows Of Resources And Net Position | | | | |
| Liabilities | | | | |
| 0400 Due to Other Funds | | | | |
| 0411 Due to Other Governments | | | | |
| 0412 Due to Primary Government | | | | |
| 0413 Due to Component Unit | | | | |
| 0420 Accounts Payable | | | | |
| 0430 Contracts Payable | | | | |
| 0450 Short-Term Payables | | | | |
| 0461 Accrued Salaries and Benefits | | | | |
| 0462 Payroll Deductions and Withholding | | | | |
| 0480 Unearned Revenues | | | | |
| 0490 Other Current Liabilities | | | | 42,485 |
| Total Liabilities | | | | \$42,485 |
| 0950 Deferred Inflows of Resources | | | | |
| Net Position | | | | |
| 0791 Net Investment in Capital Assets | | | | |
| 0009 Restricted Net Position (0792 – 0798) | 23,756 | | | |
| 0799 Unrestricted Net Position | | | | |
| Total Net Position | \$23,756 | | | |
| Total Liabilities, Deferred Inflows Of Resources And Net Position | \$23,756 | | | \$42,485 |

LEA : 122097203 Morrisville Borough SD

Printed 1/27/2020 4:05:06 PM

| Amounts Expressed in Whole Dollars | | <u>Other Agency</u> | <u>Discrete Component Units</u> | <u>Discrete Component Units</u> | <u>Total Fiduciary Funds</u> |
|--|---------------------------------------|---------------------|---------------------------------|---------------------------------|------------------------------|
| | | (89) | (98) | (99) | |
| Liabilities, Deferred Inflows Of Resources And Net Position | | | | | |
| Liabilities | | | | | |
| 0400 | Due to Other Funds | | | | |
| 0411 | Due to Other Governments | | | | |
| 0412 | Due to Primary Government | | | | |
| 0413 | Due to Component Unit | | | | |
| 0420 | Accounts Payable | | | | |
| 0430 | Contracts Payable | | | | |
| 0450 | Short-Term Payables | | | | |
| 0461 | Accrued Salaries and Benefits | | | | |
| 0462 | Payroll Deductions and Withholding | | | | |
| 0480 | Unearned Revenues | | | | |
| 0490 | Other Current Liabilities | | | | 42,485 |
| Total Liabilities | | | | | \$42,485 |
| 0950 | Deferred Inflows of Resources | | | | |
| Net Position | | | | | |
| 0791 | Net Investment in Capital Assets | | | | |
| 0009 | Restricted Net Position (0792 – 0798) | | | | 23,756 |
| 0799 | Unrestricted Net Position | | | | |
| Total Net Position | | | | | \$23,756 |
| Total Liabilities, Deferred Inflows Of Resources And Net Position | | | | | \$66,241 |

LEA : 122097203 Morrisville Borough SD

Printed 1/27/2020 4:05:08 PM

| Amounts Expressed in Whole Dollars | <u>Private Purpose Trust</u> <u>(71)</u> | <u>Investment Trust</u> <u>(72)</u> | <u>Pension Trust</u> <u>(73)</u> | <u>Discrete Component</u> <u>Units</u> <u>(98)</u> | <u>Discrete Component</u> <u>Units</u> <u>(99)</u> | <u>Total Fiduciary</u> <u>Funds</u> |
|--|---|--|-------------------------------------|--|--|--|
| Additions | | | | | | |
| 0091 Gifts and Contributions | 445 | | | | | 445 |
| 0092 Other Additions | | | | | | |
| Deductions | | | | | | |
| 0093 Scholarships Awarded | | | | | | |
| 0094 Other Deductions | 2,134 | | | | | 2,134 |
| Change In Net Position | (\$1,689) | | | | | (\$1,689) |
| 0006 Net Position – Beginning of Fiscal Year | 25,445 | | | | | 25,445 |
| 0007 Net Position Held in Trust for Pension Benefits | | | | | | |
| Net Position - End of Fiscal Year | \$23,756 | | | | | \$23,756 |

| | Revenue Reported In Current Year | Current Year Tax Accrual | Prior Year Tax Accrual | Taxes Collected In Current Year |
|--|-------------------------------------|-----------------------------|---------------------------|------------------------------------|
| Revenue from Local Sources | | | | |
| 6111 Current Real Estate Taxes | 11,842,024.00 | | | 11,842,024.00 |
| 6113 Public Utility Realty Taxes | 12,266.00 | | | 12,266.00 |
| 6153 Current Act 511 Real Estate Transfer Taxes | 166,494.00 | 9,897.00 | 12,805.00 | 169,402.00 |
| 6411 Delinquent Real Estate Taxes | 463,252.00 | 49,055.00 | 95,275.00 | 509,472.00 |
| 6500 Earnings on Investments | 89,187.00 | | | |
| 6700 Revenues from LEA Activities | 2,408.00 | | | |
| 6832 Federal IDEA Revenue Received as Pass Through | 712,061.00 | | | |
| 6910 Rentals | 9,620.00 | | | |
| 6999 Other Revenues Not Specified Above | 166,326.00 | | | |
| TOTAL Revenue from Local Sources | \$13,463,638.00 | \$58,952.00 | \$108,080.00 | \$12,533,164.00 |

| | Revenue Reported In Current Year | | | |
|--|-------------------------------------|--|--|--|
| Revenue from State Sources | | | | |
| 7110 Basic Education Funding | 3,152,115.00 | | | |
| 7160 Tuition for Orphans Subsidy | 41,755.00 | | | |
| 7271 Special Education funds for School-Aged Pupils | 730,130.00 | | | |
| 7311 Pupil Transportation Subsidy | 47,521.00 | | | |
| 7320 Rental and Sinking Fund Payments / Building Reimbursement Subsidy | 11,664.00 | | | |
| 7330 Health Services (Medical, Dental, Nurse, Act 25) | 20,926.00 | | | |
| 7340 State Property Tax Reduction Allocation | 386,671.00 | | | |
| 7361 School Safety and Security Grants | 25,000.00 | | | |
| 7505 Ready to Learn Block Grant | 119,607.00 | | | |
| 7598 Revenue for the Support of Public Schools | 1,000,000.00 | | | |
| 7810 State Share of Social Security and Medicare Taxes | 304,014.00 | | | |
| 7820 State Share of Retirement Contributions | 1,361,013.00 | | | |
| TOTAL Revenue from State Sources | \$7,200,416.00 | | | |

| | Revenue Reported In Current Year | | | |
|---|-------------------------------------|--|--|--|
| <u>Revenue from Federal Sources</u> | | | | |
| 8514 NCLB, Title I - Improving the Academic Achievement of the Disadvantaged | 236,532.00 | | | |
| 8515 NCLB, Title II - Preparing, Training and Recruiting High Quality Teachers and Principals | 39,837.00 | | | |
| 8517 NCLB, Title IV - 21St Century Schools | 791,343.00 | | | |
| 8810 School-Based Access Medicaid Reimbursement Program (SBAP) Reimbursements (Access) | 427,037.00 | | | |
| 8820 Medical Assistance Reimbursement for Administrative Claiming (Quarterly) Program | 8,640.00 | | | |
| TOTAL Revenue from Federal Sources | \$1,503,389.00 | | | |

| | Revenue Reported In Current Year | | | |
|---|-------------------------------------|--------------------|---------------------|------------------------|
| <u>Other Financing Sources</u> | | | | |
| 9400 Sale of or Compensation for Loss of Fixed Assets | 26,190.00 | | | |
| TOTAL Other Financing Sources | \$26,190.00 | | | |
| TOTAL FROM ALL SOURCES | \$22,193,633.00 | \$58,952.00 | \$108,080.00 | \$12,533,164.00 |

| | |
|-------------------------------|------------------------|
| Revenue from Local Sources | 13,463,638.00 |
| Revenue from State Sources | 7,200,416.00 |
| Revenue from Federal Sources | 1,503,389.00 |
| Other Financing Sources | 26,190.00 |
| TOTAL FROM ALL SOURCES | \$22,193,633.00 |

LEA : 122097203 Morrisville Borough SD

Printed 1/27/2020 4:05:16 PM

General Fund (10)

| 1000 Instruction | Total |
|--|------------------------|
| 100 <u>Personnel Services – Salaries</u> | |
| 100 Personnel Services – Salaries | 6,008,581.00 |
| Total Personnel Services – Salaries | \$6,008,581.00 |
| 200 <u>Personnel Services – Employee Benefits</u> | |
| 210 Group Insurance – Contracted Provider | (149.00) |
| 220 Social Security Contributions | 451,442.00 |
| 230 PSERS Retirement Contributions | 1,902,546.00 |
| 250 Unemployment Compensation | 28,408.00 |
| 260 Workers' Compensation | 55,592.00 |
| 270 Group Insurance – Self-Insurance | 1,270,814.00 |
| 299 All Other Employee Benefits | 2,212.00 |
| Total Personnel Services – Employee Benefits | \$3,710,865.00 |
| 300 <u>Purchased Professional and Technical Services</u> | |
| 310 Official / Administrative Services | 169,745.00 |
| 322 Professional Educational Services – Ius | 2,356,191.00 |
| 329 Professional Educational Services – Other | 128,743.00 |
| 330 Other Professional Services | 360.00 |
| 340 Technical Services | 12,760.00 |
| Total Purchased Professional and Technical Services | \$2,667,799.00 |
| 400 <u>Purchased Property Services</u> | |
| 410 Cleaning Services | 4,000.00 |
| 440 Rentals | 53,191.00 |
| Total Purchased Property Services | \$57,191.00 |
| 500 <u>Other Purchased Services</u> | |
| 530 Communications | 11,026.00 |
| 561 Tuition To Other School Districts Within the State | 832,815.00 |
| 562 Tuition To Pennsylvania Charter Schools | 1,009,407.00 |
| 564 Tuition To Career and Technology Centers | 715,554.00 |
| 567 Tuition To Approved Private Schools (APS) and PA Chartered Schools for the Deaf and Blind | 98,109.00 |
| 568 Tuition To Private Residential Rehabilitative Institutions (PRRI) [In-State] and Detention Centers | 138,427.00 |
| 580 Travel | 10,774.00 |
| 599 Other Miscellaneous Purchased Services | 11,459.00 |
| Total Other Purchased Services | \$2,827,571.00 |
| 600 <u>Supplies</u> | |
| 610 General Supplies | 95,665.00 |
| 640 Books and Periodicals | 47,154.00 |
| Total Supplies | \$142,819.00 |
| 700 <u>Property</u> | |
| 752 Capital Equipment – Original and Additional | 2,307.00 |
| Total Property | \$2,307.00 |
| Total 1000 Instruction | \$15,417,133.00 |

LEA : 122097203 Morrisville Borough SD

Printed 1/27/2020 4:05:16 PM

| | | | | |
|---|--------------------------|-------------------------|-----------------------|-----------------------|
| General Fund (10) | | | | |
| 1100 Regular Programs – Elementary / Secondary | <u>Elementary</u> | <u>Secondary</u> | <u>Federal</u> | <u>Total</u> |
| 100 <u>Personnel Services – Salaries</u> | | | | |
| 100 Personnel Services – Salaries | 1,029,808.00 | 2,561,751.00 | 574,258.00 | 4,165,817.00 |
| Total Personnel Services – Salaries | \$1,029,808.00 | \$2,561,751.00 | \$574,258.00 | \$4,165,817.00 |
| 200 <u>Personnel Services – Employee Benefits</u> | | | | |
| 210 Group Insurance – Contracted Provider | | | (149.00) | (149.00) |
| 220 Social Security Contributions | 83,056.00 | 209,919.00 | 13,155.00 | 306,130.00 |
| 230 PSERS Retirement Contributions | 374,096.00 | 837,466.00 | 60,228.00 | 1,271,790.00 |
| 250 Unemployment Compensation | 28,408.00 | | | 28,408.00 |
| 260 Workers' Compensation | 6,662.00 | 37,838.00 | | 44,500.00 |
| 270 Group Insurance – Self-Insurance | 231,316.00 | 472,918.00 | 103,436.00 | 807,670.00 |
| 299 All Other Employee Benefits | 138.00 | 2,074.00 | | 2,212.00 |
| Total Personnel Services – Employee Benefits | \$723,676.00 | \$1,560,215.00 | \$176,670.00 | \$2,460,561.00 |
| 300 <u>Purchased Professional and Technical Services</u> | | | | |
| 310 Official / Administrative Services | 64,251.00 | 105,494.00 | | 169,745.00 |
| 329 Professional Educational Services – Other | | 22,627.00 | 106,116.00 | 128,743.00 |
| 330 Other Professional Services | | | 360.00 | 360.00 |
| Total Purchased Professional and Technical Services | \$64,251.00 | \$128,121.00 | \$106,476.00 | \$298,848.00 |
| 400 <u>Purchased Property Services</u> | | | | |
| 410 Cleaning Services | | | 4,000.00 | 4,000.00 |
| 440 Rentals | 26,193.00 | 20,264.00 | 6,734.00 | 53,191.00 |
| Total Purchased Property Services | \$26,193.00 | \$20,264.00 | \$10,734.00 | \$57,191.00 |
| 500 <u>Other Purchased Services</u> | | | | |
| 530 Communications | | 11,026.00 | | 11,026.00 |
| 561 Tuition To Other School Districts Within the State | 10,050.00 | | | 10,050.00 |
| 562 Tuition To Pennsylvania Charter Schools | 460,748.00 | 433,989.00 | | 894,737.00 |
| 580 Travel | | 9,599.00 | 765.00 | 10,364.00 |
| 599 Other Miscellaneous Purchased Services | | | 11,459.00 | 11,459.00 |
| Total Other Purchased Services | \$470,798.00 | \$454,614.00 | \$12,224.00 | \$937,636.00 |
| 600 <u>Supplies</u> | | | | |
| 610 General Supplies | 25,606.00 | 26,708.00 | 40,251.00 | 92,565.00 |
| 640 Books and Periodicals | 6,327.00 | 15,967.00 | 23,469.00 | 45,763.00 |
| Total Supplies | \$31,933.00 | \$42,675.00 | \$63,720.00 | \$138,328.00 |
| 700 <u>Property</u> | | | | |
| 752 Capital Equipment – Original and Additional | 1,998.00 | 309.00 | | 2,307.00 |
| Total Property | \$1,998.00 | \$309.00 | | \$2,307.00 |
| Total 1100 Regular Programs – Elementary / Secondary | \$2,348,657.00 | \$4,767,949.00 | \$944,082.00 | \$8,060,688.00 |

LEA : 122097203 Morrisville Borough SD

Printed 1/27/2020 4:05:16 PM

General Fund (10)

| 1110 Regular Programs | Elementary | Secondary | Federal | Total |
|---|-----------------------|-----------------------|---------|-----------------------|
| 100 <u>Personnel Services – Salaries</u> | | | | |
| 100 Personnel Services – Salaries | 1,029,808.00 | 2,561,751.00 | | 3,591,559.00 |
| Total Personnel Services – Salaries | \$1,029,808.00 | \$2,561,751.00 | | \$3,591,559.00 |
| 200 <u>Personnel Services – Employee Benefits</u> | | | | |
| 220 Social Security Contributions | 83,056.00 | 209,919.00 | | 292,975.00 |
| 230 PSERS Retirement Contributions | 374,096.00 | 837,466.00 | | 1,211,562.00 |
| 250 Unemployment Compensation | 28,408.00 | | | 28,408.00 |
| 260 Workers' Compensation | 6,662.00 | 37,838.00 | | 44,500.00 |
| 270 Group Insurance – Self-Insurance | 231,316.00 | 472,918.00 | | 704,234.00 |
| 299 All Other Employee Benefits | 138.00 | 2,074.00 | | 2,212.00 |
| Total Personnel Services – Employee Benefits | \$723,676.00 | \$1,560,215.00 | | \$2,283,891.00 |
| 300 <u>Purchased Professional and Technical Services</u> | | | | |
| 310 Official / Administrative Services | 64,251.00 | 105,494.00 | | 169,745.00 |
| 329 Professional Educational Services – Other | | 22,627.00 | | 22,627.00 |
| Total Purchased Professional and Technical Services | \$64,251.00 | \$128,121.00 | | \$192,372.00 |
| 400 <u>Purchased Property Services</u> | | | | |
| 440 Rentals | 26,193.00 | 20,264.00 | | 46,457.00 |
| Total Purchased Property Services | \$26,193.00 | \$20,264.00 | | \$46,457.00 |
| 500 <u>Other Purchased Services</u> | | | | |
| 530 Communications | | 11,026.00 | | 11,026.00 |
| 561 Tuition To Other School Districts Within the State | 10,050.00 | | | 10,050.00 |
| 562 Tuition To Pennsylvania Charter Schools | 460,748.00 | 433,989.00 | | 894,737.00 |
| 580 Travel | | 9,599.00 | | 9,599.00 |
| Total Other Purchased Services | \$470,798.00 | \$454,614.00 | | \$925,412.00 |
| 600 <u>Supplies</u> | | | | |
| 610 General Supplies | 25,606.00 | 26,708.00 | | 52,314.00 |
| 640 Books and Periodicals | 6,327.00 | 15,967.00 | | 22,294.00 |
| Total Supplies | \$31,933.00 | \$42,675.00 | | \$74,608.00 |
| 700 <u>Property</u> | | | | |
| 752 Capital Equipment – Original and Additional | 1,998.00 | 309.00 | | 2,307.00 |
| Total Property | \$1,998.00 | \$309.00 | | \$2,307.00 |
| Total 1110 Regular Programs | \$2,348,657.00 | \$4,767,949.00 | | \$7,116,606.00 |

LEA : 122097203 Morrisville Borough SD

Printed 1/27/2020 4:05:16 PM

| General Fund (10) | | | | |
|--|------------|-----------|---------------------|---------------------|
| 1190 Federally-Funded Regular Programs | Elementary | Secondary | Federal | Total |
| 100 Personnel Services – Salaries | | | | |
| 100 Personnel Services – Salaries | | | 574,258.00 | 574,258.00 |
| Total Personnel Services – Salaries | | | \$574,258.00 | \$574,258.00 |
| 200 Personnel Services – Employee Benefits | | | | |
| 210 Group Insurance – Contracted Provider | | | (149.00) | (149.00) |
| 220 Social Security Contributions | | | 13,155.00 | 13,155.00 |
| 230 PSERS Retirement Contributions | | | 60,228.00 | 60,228.00 |
| 270 Group Insurance – Self-Insurance | | | 103,436.00 | 103,436.00 |
| Total Personnel Services – Employee Benefits | | | \$176,670.00 | \$176,670.00 |
| 300 Purchased Professional and Technical Services | | | | |
| 329 Professional Educational Services – Other | | | 106,116.00 | 106,116.00 |
| 330 Other Professional Services | | | 360.00 | 360.00 |
| Total Purchased Professional and Technical Services | | | \$106,476.00 | \$106,476.00 |
| 400 Purchased Property Services | | | | |
| 410 Cleaning Services | | | 4,000.00 | 4,000.00 |
| 440 Rentals | | | 6,734.00 | 6,734.00 |
| Total Purchased Property Services | | | \$10,734.00 | \$10,734.00 |
| 500 Other Purchased Services | | | | |
| 580 Travel | | | 765.00 | 765.00 |
| 599 Other Miscellaneous Purchased Services | | | 11,459.00 | 11,459.00 |
| Total Other Purchased Services | | | \$12,224.00 | \$12,224.00 |
| 600 Supplies | | | | |
| 610 General Supplies | | | 40,251.00 | 40,251.00 |
| 640 Books and Periodicals | | | 23,469.00 | 23,469.00 |
| Total Supplies | | | \$63,720.00 | \$63,720.00 |
| Total 1190 Federally-Funded Regular Programs | | | \$944,082.00 | \$944,082.00 |

LEA : 122097203 Morrisville Borough SD

Printed 1/27/2020 4:05:16 PM

| | | | | |
|--|-----------------------|-----------------------|---------------------|-----------------------|
| General Fund (10) | | | | |
| 1200 Special Programs – Elementary / Secondary | <u>Elementary</u> | <u>Secondary</u> | <u>Federal</u> | <u>Total</u> |
| 100 <u>Personnel Services – Salaries</u> | | | | |
| 100 Personnel Services – Salaries | 747,201.00 | 821,824.00 | 177,926.00 | 1,746,951.00 |
| Total Personnel Services – Salaries | \$747,201.00 | \$821,824.00 | \$177,926.00 | \$1,746,951.00 |
| 200 <u>Personnel Services – Employee Benefits</u> | | | | |
| 220 Social Security Contributions | 65,505.00 | 72,459.00 | | 137,964.00 |
| 230 PSERS Retirement Contributions | 280,550.00 | 318,809.00 | | 599,359.00 |
| 260 Workers’ Compensation | | 9,085.00 | | 9,085.00 |
| 270 Group Insurance – Self-Insurance | 207,095.00 | 238,754.00 | | 445,849.00 |
| Total Personnel Services – Employee Benefits | \$553,150.00 | \$639,107.00 | | \$1,192,257.00 |
| 300 <u>Purchased Professional and Technical Services</u> | | | | |
| 322 Professional Educational Services – Ius | 1,023,934.00 | 1,076,625.00 | 246,251.00 | 2,346,810.00 |
| 340 Technical Services | | 12,760.00 | | 12,760.00 |
| Total Purchased Professional and Technical Services | \$1,023,934.00 | \$1,089,385.00 | \$246,251.00 | \$2,359,570.00 |
| 500 <u>Other Purchased Services</u> | | | | |
| 561 Tuition To Other School Districts Within the State | 32,277.00 | 790,488.00 | | 822,765.00 |
| 562 Tuition To Pennsylvania Charter Schools | | 114,670.00 | | 114,670.00 |
| 567 Tuition To Approved Private Schools (APS) and PA Chartered Schools for the Deaf and Blind | | 98,109.00 | | 98,109.00 |
| 568 Tuition To Private Residential Rehabilitative Institutions (PRRI) [In-State] and Detention Centers | 101,649.00 | 36,778.00 | | 138,427.00 |
| Total Other Purchased Services | \$133,926.00 | \$1,040,045.00 | | \$1,173,971.00 |
| 600 <u>Supplies</u> | | | | |
| 610 General Supplies | 743.00 | 1,300.00 | 800.00 | 2,843.00 |
| 640 Books and Periodicals | 1,391.00 | | | 1,391.00 |
| Total Supplies | \$2,134.00 | \$1,300.00 | \$800.00 | \$4,234.00 |
| Total 1200 Special Programs – Elementary / Secondary | \$2,460,345.00 | \$3,591,661.00 | \$424,977.00 | \$6,476,983.00 |

LEA : 122097203 Morrisville Borough SD

Printed 1/27/2020 4:05:16 PM

| | | | | |
|--|-------------------|------------------|----------------|--------------|
| General Fund (10) | | | | |
| 1210 Life Skills Support | | | | |
| | <u>Elementary</u> | <u>Secondary</u> | <u>Federal</u> | <u>Total</u> |
| 100 <u>Personnel Services – Salaries</u> | | | | |
| 100 Personnel Services – Salaries | | 130,105.00 | 21,811.00 | 151,916.00 |
| Total Personnel Services – Salaries | | \$130,105.00 | \$21,811.00 | \$151,916.00 |
| 200 <u>Personnel Services – Employee Benefits</u> | | | | |
| 220 Social Security Contributions | | 10,993.00 | | 10,993.00 |
| 230 PSERS Retirement Contributions | | 50,785.00 | | 50,785.00 |
| 260 Workers’ Compensation | | 1,535.00 | | 1,535.00 |
| 270 Group Insurance – Self-Insurance | | 49,129.00 | | 49,129.00 |
| Total Personnel Services – Employee Benefits | | \$112,442.00 | | \$112,442.00 |
| 300 <u>Purchased Professional and Technical Services</u> | | | | |
| 322 Professional Educational Services – Ius | | 24,730.00 | | 24,730.00 |
| Total Purchased Professional and Technical Services | | \$24,730.00 | | \$24,730.00 |
| 500 <u>Other Purchased Services</u> | | | | |
| 561 Tuition To Other School Districts Within the State | | 649,343.00 | | 649,343.00 |
| Total Other Purchased Services | | \$649,343.00 | | \$649,343.00 |
| 600 <u>Supplies</u> | | | | |
| 610 General Supplies | | 272.00 | | 272.00 |
| Total Supplies | | \$272.00 | | \$272.00 |
| Total 1210 Life Skills Support | | \$916,892.00 | \$21,811.00 | \$938,703.00 |

LEA : 122097203 Morrisville Borough SD

Printed 1/27/2020 4:05:16 PM

General Fund (10)

1220 Sensory Support

| | <u>Elementary</u> | <u>Secondary</u> | <u>Federal</u> | <u>Total</u> |
|--|---------------------|---------------------|----------------|---------------------|
| 300 <u>Purchased Professional and Technical Services</u> | | | | |
| 322 Professional Educational Services – lus | 522,269.00 | 145,038.00 | | 667,307.00 |
| Total Purchased Professional and Technical Services | \$522,269.00 | \$145,038.00 | | \$667,307.00 |
| Total 1220 Sensory Support | \$522,269.00 | \$145,038.00 | | \$667,307.00 |

LEA : 122097203 Morrisville Borough SD

Printed 1/27/2020 4:05:16 PM

| | | | | |
|--|---------------------|---------------------|----------------|-----------------------|
| General Fund (10) | | | | |
| 1230 Emotional Support | <u>Elementary</u> | <u>Secondary</u> | <u>Federal</u> | <u>Total</u> |
| 100 <u>Personnel Services – Salaries</u> | | | | |
| 100 Personnel Services – Salaries | 332,159.00 | 156,223.00 | | 488,382.00 |
| Total Personnel Services – Salaries | \$332,159.00 | \$156,223.00 | | \$488,382.00 |
| 200 <u>Personnel Services – Employee Benefits</u> | | | | |
| 220 Social Security Contributions | 25,517.00 | 11,797.00 | | 37,314.00 |
| 230 PSERS Retirement Contributions | 108,376.00 | 50,139.00 | | 158,515.00 |
| 260 Workers’ Compensation | | 1,559.00 | | 1,559.00 |
| 270 Group Insurance – Self-Insurance | 18,511.00 | 58,365.00 | | 76,876.00 |
| Total Personnel Services – Employee Benefits | \$152,404.00 | \$121,860.00 | | \$274,264.00 |
| 300 <u>Purchased Professional and Technical Services</u> | | | | |
| 322 Professional Educational Services – Ius | 311,582.00 | 446,266.00 | | 757,848.00 |
| Total Purchased Professional and Technical Services | \$311,582.00 | \$446,266.00 | | \$757,848.00 |
| 500 <u>Other Purchased Services</u> | | | | |
| 561 Tuition To Other School Districts Within the State | | 141,145.00 | | 141,145.00 |
| 562 Tuition To Pennsylvania Charter Schools | | 114,670.00 | | 114,670.00 |
| Total Other Purchased Services | | \$255,815.00 | | \$255,815.00 |
| 600 <u>Supplies</u> | | | | |
| 610 General Supplies | 743.00 | | | 743.00 |
| Total Supplies | \$743.00 | | | \$743.00 |
| Total 1230 Emotional Support | \$796,888.00 | \$980,164.00 | | \$1,777,052.00 |

LEA : 122097203 Morrisville Borough SD

Printed 1/27/2020 4:05:16 PM

| | | | | |
|--|--------------------------|-------------------------|-----------------------|-----------------------|
| General Fund (10) | | | | |
| 1240 Academic Support | <u>Elementary</u> | <u>Secondary</u> | <u>Federal</u> | <u>Total</u> |
| 100 <u>Personnel Services – Salaries</u> | | | | |
| 100 Personnel Services – Salaries | 415,042.00 | 499,983.00 | 80,299.00 | 995,324.00 |
| Total Personnel Services – Salaries | \$415,042.00 | \$499,983.00 | \$80,299.00 | \$995,324.00 |
| 200 <u>Personnel Services – Employee Benefits</u> | | | | |
| 220 Social Security Contributions | 39,988.00 | 41,057.00 | | 81,045.00 |
| 230 PSERS Retirement Contributions | 172,174.00 | 181,663.00 | | 353,837.00 |
| 260 Workers’ Compensation | | 5,991.00 | | 5,991.00 |
| 270 Group Insurance – Self-Insurance | 188,584.00 | 107,292.00 | | 295,876.00 |
| Total Personnel Services – Employee Benefits | \$400,746.00 | \$336,003.00 | | \$736,749.00 |
| 300 <u>Purchased Professional and Technical Services</u> | | | | |
| 322 Professional Educational Services – Ius | | | 246,251.00 | 246,251.00 |
| Total Purchased Professional and Technical Services | | | \$246,251.00 | \$246,251.00 |
| 500 <u>Other Purchased Services</u> | | | | |
| 561 Tuition To Other School Districts Within the State | 32,277.00 | | | 32,277.00 |
| 568 Tuition To Private Residential Rehabilitative Institutions (PRRI) [In-State] and Detention Centers | (1,529.00) | | | (1,529.00) |
| Total Other Purchased Services | \$30,748.00 | | | \$30,748.00 |
| 600 <u>Supplies</u> | | | | |
| 610 General Supplies | | 60.00 | 800.00 | 860.00 |
| 640 Books and Periodicals | 1,391.00 | | | 1,391.00 |
| Total Supplies | \$1,391.00 | \$60.00 | \$800.00 | \$2,251.00 |
| Total 1240 Academic Support | \$847,927.00 | \$836,046.00 | \$327,350.00 | \$2,011,323.00 |

LEA : 122097203 Morrisville Borough SD

Printed 1/27/2020 4:05:16 PM

| | | | | |
|--|--------------------------|-------------------------|-----------------------|-----------------------|
| General Fund (10) | | | | |
| 1241 Learning Support – Public | <u>Elementary</u> | <u>Secondary</u> | <u>Federal</u> | <u>Total</u> |
| 100 <u>Personnel Services – Salaries</u> | | | | |
| 100 Personnel Services – Salaries | 311,344.00 | 480,018.00 | 80,299.00 | 871,661.00 |
| Total Personnel Services – Salaries | \$311,344.00 | \$480,018.00 | \$80,299.00 | \$871,661.00 |
| 200 <u>Personnel Services – Employee Benefits</u> | | | | |
| 220 Social Security Contributions | 32,343.00 | 39,715.00 | | 72,058.00 |
| 230 PSERS Retirement Contributions | 138,842.00 | 175,245.00 | | 314,087.00 |
| 260 Workers’ Compensation | | 5,991.00 | | 5,991.00 |
| 270 Group Insurance – Self-Insurance | 167,148.00 | 101,826.00 | | 268,974.00 |
| Total Personnel Services – Employee Benefits | \$338,333.00 | \$322,777.00 | | \$661,110.00 |
| 300 <u>Purchased Professional and Technical Services</u> | | | | |
| 322 Professional Educational Services – Ius | | | 246,251.00 | 246,251.00 |
| Total Purchased Professional and Technical Services | | | \$246,251.00 | \$246,251.00 |
| 500 <u>Other Purchased Services</u> | | | | |
| 561 Tuition To Other School Districts Within the State | 32,277.00 | | | 32,277.00 |
| 568 Tuition To Private Residential Rehabilitative Institutions (PRRI) [In-State] and Detention Centers | (1,529.00) | | | (1,529.00) |
| Total Other Purchased Services | \$30,748.00 | | | \$30,748.00 |
| 600 <u>Supplies</u> | | | | |
| 610 General Supplies | | 60.00 | 800.00 | 860.00 |
| 640 Books and Periodicals | 1,391.00 | | | 1,391.00 |
| Total Supplies | \$1,391.00 | \$60.00 | \$800.00 | \$2,251.00 |
| Total 1241 Learning Support – Public | \$681,816.00 | \$802,855.00 | \$327,350.00 | \$1,812,021.00 |

LEA : 122097203 Morrisville Borough SD

Printed 1/27/2020 4:05:16 PM

| | | | | |
|---|---------------------|--------------------|----------------|---------------------|
| General Fund (10) | | | | |
| 1243 Gifted Support | <u>Elementary</u> | <u>Secondary</u> | <u>Federal</u> | <u>Total</u> |
| 100 <u>Personnel Services – Salaries</u> | | | | |
| 100 Personnel Services – Salaries | 103,698.00 | 19,965.00 | | 123,663.00 |
| Total Personnel Services – Salaries | \$103,698.00 | \$19,965.00 | | \$123,663.00 |
| 200 <u>Personnel Services – Employee Benefits</u> | | | | |
| 220 Social Security Contributions | 7,645.00 | 1,342.00 | | 8,987.00 |
| 230 PSERS Retirement Contributions | 33,332.00 | 6,418.00 | | 39,750.00 |
| 270 Group Insurance – Self-Insurance | 21,436.00 | 5,466.00 | | 26,902.00 |
| Total Personnel Services – Employee Benefits | \$62,413.00 | \$13,226.00 | | \$75,639.00 |
| Total 1243 Gifted Support | \$166,111.00 | \$33,191.00 | | \$199,302.00 |

LEA : 122097203 Morrisville Borough SD

Printed 1/27/2020 4:05:16 PM

General Fund (10)

1270 Multi-Handicapped Support

| | <u>Elementary</u> | <u>Secondary</u> | <u>Federal</u> | <u>Total</u> |
|--|--------------------|---------------------|----------------|---------------------|
| 300 <u>Purchased Professional and Technical Services</u> | | | | |
| 322 Professional Educational Services – lus | 45,230.00 | 282,434.00 | | 327,664.00 |
| Total Purchased Professional and Technical Services | \$45,230.00 | \$282,434.00 | | \$327,664.00 |
| Total 1270 Multi-Handicapped Support | \$45,230.00 | \$282,434.00 | | \$327,664.00 |

LEA : 122097203 Morrisville Borough SD

Printed 1/27/2020 4:05:16 PM

| | | | | |
|--|---------------------|---------------------|--------------------|---------------------|
| General Fund (10) | | | | |
| 1290 Special Programs - Other Support | <u>Elementary</u> | <u>Secondary</u> | <u>Federal</u> | <u>Total</u> |
| 100 <u>Personnel Services – Salaries</u> | | | | |
| 100 Personnel Services – Salaries | | 35,513.00 | 75,816.00 | 111,329.00 |
| Total Personnel Services – Salaries | | \$35,513.00 | \$75,816.00 | \$111,329.00 |
| 200 <u>Personnel Services – Employee Benefits</u> | | | | |
| 220 Social Security Contributions | | 8,612.00 | | 8,612.00 |
| 230 PSERS Retirement Contributions | | 36,222.00 | | 36,222.00 |
| 270 Group Insurance – Self-Insurance | | 23,968.00 | | 23,968.00 |
| Total Personnel Services – Employee Benefits | | \$68,802.00 | | \$68,802.00 |
| 300 <u>Purchased Professional and Technical Services</u> | | | | |
| 322 Professional Educational Services – Ius | 144,853.00 | 178,157.00 | | 323,010.00 |
| 340 Technical Services | | 12,760.00 | | 12,760.00 |
| Total Purchased Professional and Technical Services | \$144,853.00 | \$190,917.00 | | \$335,770.00 |
| 500 <u>Other Purchased Services</u> | | | | |
| 567 Tuition To Approved Private Schools (APS) and PA Chartered Schools for the Deaf and Blind | | 98,109.00 | | 98,109.00 |
| 568 Tuition To Private Residential Rehabilitative Institutions (PRRI) [In-State] and Detention Centers | 103,178.00 | 36,778.00 | | 139,956.00 |
| Total Other Purchased Services | \$103,178.00 | \$134,887.00 | | \$238,065.00 |
| 600 <u>Supplies</u> | | | | |
| 610 General Supplies | | 968.00 | | 968.00 |
| Total Supplies | | \$968.00 | | \$968.00 |
| Total 1290 Special Programs - Other Support | \$248,031.00 | \$431,087.00 | \$75,816.00 | \$754,934.00 |

LEA : 122097203 Morrisville Borough SD

Printed 1/27/2020 4:05:16 PM

General Fund (10)

1300 Vocational Education

| | Elementary | Secondary | Federal | Total |
|--|------------|---------------------|---------|---------------------|
| 100 <u>Personnel Services – Salaries</u> | | | | |
| 100 Personnel Services – Salaries | | 48,838.00 | | 48,838.00 |
| Total Personnel Services – Salaries | | \$48,838.00 | | \$48,838.00 |
| 200 <u>Personnel Services – Employee Benefits</u> | | | | |
| 220 Social Security Contributions | | 3,954.00 | | 3,954.00 |
| 230 PSERS Retirement Contributions | | 15,705.00 | | 15,705.00 |
| 260 Workers’ Compensation | | 2,007.00 | | 2,007.00 |
| 270 Group Insurance – Self-Insurance | | 3,309.00 | | 3,309.00 |
| Total Personnel Services – Employee Benefits | | \$24,975.00 | | \$24,975.00 |
| 500 <u>Other Purchased Services</u> | | | | |
| 564 Tuition To Career and Technology Centers | | 715,554.00 | | 715,554.00 |
| 580 Travel | | 410.00 | | 410.00 |
| Total Other Purchased Services | | \$715,964.00 | | \$715,964.00 |
| 600 <u>Supplies</u> | | | | |
| 610 General Supplies | | 257.00 | | 257.00 |
| Total Supplies | | \$257.00 | | \$257.00 |
| Total 1300 Vocational Education | | \$790,034.00 | | \$790,034.00 |

LEA : 122097203 Morrisville Borough SD

Printed 1/27/2020 4:05:16 PM

General Fund (10)

| | | | | |
|--|-------------------|------------------|----------------|--------------|
| 1400 Other Instructional Programs – Elementary / Secondary | <u>Elementary</u> | <u>Secondary</u> | <u>Federal</u> | <u>Total</u> |
| 100 <u>Personnel Services – Salaries</u> | | | | |
| 100 Personnel Services – Salaries | 560.00 | 3,677.00 | | 4,237.00 |
| Total Personnel Services – Salaries | \$560.00 | \$3,677.00 | | \$4,237.00 |
| 200 <u>Personnel Services – Employee Benefits</u> | | | | |
| 220 Social Security Contributions | 41.00 | 277.00 | | 318.00 |
| 230 PSERS Retirement Contributions | 187.00 | 1,218.00 | | 1,405.00 |
| 270 Group Insurance – Self-Insurance | | 298.00 | | 298.00 |
| Total Personnel Services – Employee Benefits | \$228.00 | \$1,793.00 | | \$2,021.00 |
| Total 1400 Other Instructional Programs – Elementary / Secondary | \$788.00 | \$5,470.00 | | \$6,258.00 |

LEA : 122097203 Morrisville Borough SD

Printed 1/27/2020 4:05:16 PM

General Fund (10)

| 1430 Homebound Instruction | <u>Elementary</u> | <u>Secondary</u> | <u>Federal</u> | <u>Total</u> |
|---|-------------------|-------------------|----------------|-------------------|
| 100 Personnel Services – Salaries | | | | |
| 100 Personnel Services – Salaries | 560.00 | 3,677.00 | | 4,237.00 |
| Total Personnel Services – Salaries | \$560.00 | \$3,677.00 | | \$4,237.00 |
| 200 Personnel Services – Employee Benefits | | | | |
| 220 Social Security Contributions | 41.00 | 277.00 | | 318.00 |
| 230 PSERS Retirement Contributions | 187.00 | 1,218.00 | | 1,405.00 |
| 270 Group Insurance – Self-Insurance | | 298.00 | | 298.00 |
| Total Personnel Services – Employee Benefits | \$228.00 | \$1,793.00 | | \$2,021.00 |
| Total 1430 Homebound Instruction | \$788.00 | \$5,470.00 | | \$6,258.00 |

LEA : 122097203 Morrisville Borough SD

Printed 1/27/2020 4:05:16 PM

General Fund (10)

1500 Nonpublic School Programs

| | <u>Elementary</u> | <u>Secondary</u> | <u>Federal</u> | <u>Total</u> |
|--|-------------------|------------------|-------------------|-------------------|
| 300 <u>Purchased Professional and Technical Services</u> | | | | |
| 322 Professional Educational Services – lus | | | 9,381.00 | 9,381.00 |
| Total Purchased Professional and Technical Services | | | \$9,381.00 | \$9,381.00 |
| Total 1500 Nonpublic School Programs | | | \$9,381.00 | \$9,381.00 |

LEA : 122097203 Morrisville Borough SD

Printed 1/27/2020 4:05:16 PM

General Fund (10)

1800 Pre-Kindergarten

Elementary Secondary Federal Total

| | | | | |
|--|--|--|--|--------------------|
| 100 <u>Personnel Services – Salaries</u> | | | | |
| 100 Personnel Services – Salaries | | | | 42,738.00 |
| Total Personnel Services – Salaries | | | | \$42,738.00 |
| 200 <u>Personnel Services – Employee Benefits</u> | | | | |
| 220 Social Security Contributions | | | | 3,076.00 |
| 230 PSERS Retirement Contributions | | | | 14,287.00 |
| 270 Group Insurance – Self-Insurance | | | | 13,688.00 |
| Total Personnel Services – Employee Benefits | | | | \$31,051.00 |
| Total 1800 Pre-Kindergarten | | | | \$73,789.00 |

LEA : 122097203 Morrisville Borough SD

Printed 1/27/2020 4:05:16 PM

General Fund (10)

1801 Pre-K Instruction

Elementary Secondary Federal Total

| | | | | |
|---|--|--|--|--------------------|
| 100 <u>Personnel Services – Salaries</u> | | | | |
| 100 Personnel Services – Salaries | | | | 42,738.00 |
| Total Personnel Services – Salaries | | | | \$42,738.00 |
| 200 <u>Personnel Services – Employee Benefits</u> | | | | |
| 220 Social Security Contributions | | | | 3,076.00 |
| 230 PSERS Retirement Contributions | | | | 14,287.00 |
| 270 Group Insurance – Self-Insurance | | | | 13,688.00 |
| Total Personnel Services – Employee Benefits | | | | \$31,051.00 |
| Total 1801 Pre-K Instruction | | | | \$73,789.00 |

LEA : 122097203 Morrisville Borough SD

Printed 1/27/2020 4:05:23 PM

General Fund (10)

| | | |
|--|-----------------------|---------------------|
| 2000 Support Services | | <u>Total</u> |
| 100 <u>Personnel Services – Salaries</u> | | |
| 100 Personnel Services – Salaries | 2,497,384.00 | |
| Total Personnel Services – Salaries | \$2,497,384.00 | |
| 200 <u>Personnel Services – Employee Benefits</u> | | |
| 210 Group Insurance – Contracted Provider | 9,819.00 | |
| 220 Social Security Contributions | 180,003.00 | |
| 230 PSERS Retirement Contributions | 775,882.00 | |
| 260 Workers’ Compensation | 19,933.00 | |
| 270 Group Insurance – Self-Insurance | 546,990.00 | |
| 299 All Other Employee Benefits | (715.00) | |
| Total Personnel Services – Employee Benefits | \$1,531,912.00 | |
| 300 <u>Purchased Professional and Technical Services</u> | | |
| 310 Official / Administrative Services | 45,653.00 | |
| 323 Professional Educational Services – Other Educational Agencies | 10,000.00 | |
| 329 Professional Educational Services – Other | 69,027.00 | |
| 330 Other Professional Services | 219,896.00 | |
| 340 Technical Services | 151,374.00 | |
| 390 Other Purchased Professional and Technical Services | 52,685.00 | |
| Total Purchased Professional and Technical Services | \$548,635.00 | |
| 400 <u>Purchased Property Services</u> | | |
| 410 Cleaning Services | 114,984.00 | |
| 420 Utility Services | 141,276.00 | |
| 430 Repairs and Maintenance Services | 159,425.00 | |
| 440 Rentals | 42,163.00 | |
| 460 Extermination Services | 4,965.00 | |
| Total Purchased Property Services | \$462,813.00 | |
| 500 <u>Other Purchased Services</u> | | |
| 513 Contracted Carriers | 58,526.00 | |
| 516 Student Transportation Services From the IU | 478,069.00 | |
| 520 Insurance – General | 13,055.00 | |
| 523 General Property and Liability Insurance | 82,405.00 | |
| 530 Communications | 35,173.00 | |
| 541 Advertising Related to Federal Grant Awards | 3,005.00 | |
| 550 Printing and Binding | 213.00 | |
| 580 Travel | 5,658.00 | |
| 595 IU Payments By Withholding | 5,512.00 | |
| 599 Other Miscellaneous Purchased Services | (25.00) | |
| Total Other Purchased Services | \$681,591.00 | |
| 600 <u>Supplies</u> | | |
| 610 General Supplies | 56,410.00 | |
| 620 Energy | 70,859.00 | |
| 640 Books and Periodicals | 99,805.00 | |
| Total Supplies | \$227,074.00 | |

LEA : 122097203 Morrisville Borough SD

Printed 1/27/2020 4:05:23 PM

General Fund (10)

2000 Support Services

Total

| | |
|---|----------------|
| 700 <u>Property</u> | |
| 752 Capital Equipment – Original and Additional | 37,315.00 |
| 762 Capitalized Equipment - Replacement | 57,022.00 |
| Total Property | \$94,337.00 |
| 800 <u>Other Objects</u> | |
| 810 Dues and Fees | 42,070.00 |
| Total Other Objects | \$42,070.00 |
| Total 2000 Support Services | \$6,085,816.00 |

LEA : 122097203 Morrisville Borough SD

Printed 1/27/2020 4:05:23 PM

| | | | | |
|---|--------------------------|-------------------------|-----------------------|-----------------------|
| General Fund (10) | | | | |
| 2100 Support Services – Students | <u>Elementary</u> | <u>Secondary</u> | <u>Federal</u> | <u>Total</u> |
| 100 <u>Personnel Services – Salaries</u> | | | | |
| 100 Personnel Services – Salaries | 182,348.00 | 190,943.00 | 161,077.00 | 585,006.00 |
| Total Personnel Services – Salaries | \$182,348.00 | \$190,943.00 | \$161,077.00 | \$585,006.00 |
| 200 <u>Personnel Services – Employee Benefits</u> | | | | |
| 210 Group Insurance – Contracted Provider | 1,898.00 | 6,779.00 | | 8,677.00 |
| 220 Social Security Contributions | 14,083.00 | 17,119.00 | | 34,977.00 |
| 230 PSERS Retirement Contributions | 61,863.00 | 73,562.00 | | 152,353.00 |
| 260 Workers' Compensation | 2,664.00 | 1,745.00 | | 5,304.00 |
| 270 Group Insurance – Self-Insurance | 45,314.00 | 38,273.00 | 26,803.00 | 134,224.00 |
| Total Personnel Services – Employee Benefits | \$125,822.00 | \$137,478.00 | \$26,803.00 | \$335,535.00 |
| 300 <u>Purchased Professional and Technical Services</u> | | | | |
| 329 Professional Educational Services – Other | | | 69,027.00 | 69,027.00 |
| 330 Other Professional Services | | 4,750.00 | | 4,750.00 |
| 390 Other Purchased Professional and Technical Services | | 4,750.00 | | 4,750.00 |
| Total Purchased Professional and Technical Services | | \$9,500.00 | \$69,027.00 | \$78,527.00 |
| 500 <u>Other Purchased Services</u> | | | | |
| 550 Printing and Binding | | 213.00 | | 213.00 |
| 580 Travel | | 324.00 | | 324.00 |
| 599 Other Miscellaneous Purchased Services | | | (25.00) | (25.00) |
| Total Other Purchased Services | | \$537.00 | (\$25.00) | \$512.00 |
| 600 <u>Supplies</u> | | | | |
| 610 General Supplies | 2,704.00 | 1,198.00 | | 3,902.00 |
| 640 Books and Periodicals | | 292.00 | | 292.00 |
| Total Supplies | \$2,704.00 | \$1,490.00 | | \$4,194.00 |
| 700 <u>Property</u> | | | | |
| 752 Capital Equipment – Original and Additional | 4,227.00 | 1,020.00 | | 5,247.00 |
| Total Property | \$4,227.00 | \$1,020.00 | | \$5,247.00 |
| 800 <u>Other Objects</u> | | | | |
| 810 Dues and Fees | 60.00 | | | 60.00 |
| Total Other Objects | \$60.00 | | | \$60.00 |
| Total 2100 Support Services – Students | \$315,161.00 | \$340,968.00 | \$256,882.00 | \$1,009,081.00 |

LEA : 122097203 Morrisville Borough SD

Printed 1/27/2020 4:05:23 PM

| | | | | |
|--|-------------------|------------------|----------------|--------------|
| General Fund (10) | | | | |
| 2110 Supervision of Student Services | <u>Elementary</u> | <u>Secondary</u> | <u>Federal</u> | <u>Total</u> |
| 100 <u>Personnel Services – Salaries</u> | | | | |
| 100 Personnel Services – Salaries | | | 118,077.00 | 118,077.00 |
| Total Personnel Services – Salaries | | | \$118,077.00 | \$118,077.00 |
| 200 <u>Personnel Services – Employee Benefits</u> | | | | |
| 270 Group Insurance – Self-Insurance | | | 26,803.00 | 26,803.00 |
| Total Personnel Services – Employee Benefits | | | \$26,803.00 | \$26,803.00 |
| 300 <u>Purchased Professional and Technical Services</u> | | | | |
| 329 Professional Educational Services – Other | | | 69,027.00 | 69,027.00 |
| Total Purchased Professional and Technical Services | | | \$69,027.00 | \$69,027.00 |
| 500 <u>Other Purchased Services</u> | | | | |
| 550 Printing and Binding | | 88.00 | | 88.00 |
| 580 Travel | | 324.00 | | 324.00 |
| 599 Other Miscellaneous Purchased Services | | | (25.00) | (25.00) |
| Total Other Purchased Services | | \$412.00 | (\$25.00) | \$387.00 |
| 600 <u>Supplies</u> | | | | |
| 610 General Supplies | 2,133.00 | 235.00 | | 2,368.00 |
| Total Supplies | \$2,133.00 | \$235.00 | | \$2,368.00 |
| 700 <u>Property</u> | | | | |
| 752 Capital Equipment – Original and Additional | 4,227.00 | 1,020.00 | | 5,247.00 |
| Total Property | \$4,227.00 | \$1,020.00 | | \$5,247.00 |
| 800 <u>Other Objects</u> | | | | |
| 810 Dues and Fees | 60.00 | | | 60.00 |
| Total Other Objects | \$60.00 | | | \$60.00 |
| Total 2110 Supervision of Student Services | \$6,420.00 | \$1,667.00 | \$213,882.00 | \$221,969.00 |

LEA : 122097203 Morrisville Borough SD

Printed 1/27/2020 4:05:23 PM

| | | | | |
|--|-------------------|------------------|----------------|--------------|
| General Fund (10) | | | | |
| 2111 Supervision of Student Services – Head of Component | <u>Elementary</u> | <u>Secondary</u> | <u>Federal</u> | <u>Total</u> |
| 100 <u>Personnel Services – Salaries</u> | | | | |
| 100 Personnel Services – Salaries | | | 118,077.00 | 118,077.00 |
| Total Personnel Services – Salaries | | | \$118,077.00 | \$118,077.00 |
| 200 <u>Personnel Services – Employee Benefits</u> | | | | |
| 270 Group Insurance – Self-Insurance | | | 26,803.00 | 26,803.00 |
| Total Personnel Services – Employee Benefits | | | \$26,803.00 | \$26,803.00 |
| 300 <u>Purchased Professional and Technical Services</u> | | | | |
| 329 Professional Educational Services – Other | | | 69,027.00 | 69,027.00 |
| Total Purchased Professional and Technical Services | | | \$69,027.00 | \$69,027.00 |
| 500 <u>Other Purchased Services</u> | | | | |
| 550 Printing and Binding | | 88.00 | | 88.00 |
| 580 Travel | | 324.00 | | 324.00 |
| 599 Other Miscellaneous Purchased Services | | | (25.00) | (25.00) |
| Total Other Purchased Services | | \$412.00 | (\$25.00) | \$387.00 |
| 600 <u>Supplies</u> | | | | |
| 610 General Supplies | 2,133.00 | 235.00 | | 2,368.00 |
| Total Supplies | \$2,133.00 | \$235.00 | | \$2,368.00 |
| 700 <u>Property</u> | | | | |
| 752 Capital Equipment – Original and Additional | 4,227.00 | 1,020.00 | | 5,247.00 |
| Total Property | \$4,227.00 | \$1,020.00 | | \$5,247.00 |
| 800 <u>Other Objects</u> | | | | |
| 810 Dues and Fees | 60.00 | | | 60.00 |
| Total Other Objects | \$60.00 | | | \$60.00 |
| Total 2111 Supervision of Student Services – Head of Component | \$6,420.00 | \$1,667.00 | \$213,882.00 | \$221,969.00 |

LEA : 122097203 Morrisville Borough SD

Printed 1/27/2020 4:05:23 PM

| | | | | |
|---|--------------------------|-------------------------|-----------------------|---------------------|
| General Fund (10) | | | | |
| 2120 Guidance Services | <u>Elementary</u> | <u>Secondary</u> | <u>Federal</u> | <u>Total</u> |
| 100 <u>Personnel Services – Salaries</u> | | | | |
| 100 Personnel Services – Salaries | 168,083.00 | 139,754.00 | | 307,837.00 |
| Total Personnel Services – Salaries | \$168,083.00 | \$139,754.00 | | \$307,837.00 |
| 200 <u>Personnel Services – Employee Benefits</u> | | | | |
| 220 Social Security Contributions | 12,325.00 | 10,833.00 | | 23,158.00 |
| 230 PSERS Retirement Contributions | 54,317.00 | 45,644.00 | | 99,961.00 |
| 260 Workers’ Compensation | 2,664.00 | 1,745.00 | | 4,409.00 |
| 270 Group Insurance – Self-Insurance | 43,518.00 | 31,859.00 | | 75,377.00 |
| Total Personnel Services – Employee Benefits | \$112,824.00 | \$90,081.00 | | \$202,905.00 |
| 300 <u>Purchased Professional and Technical Services</u> | | | | |
| 390 Other Purchased Professional and Technical Services | | 4,750.00 | | 4,750.00 |
| Total Purchased Professional and Technical Services | | \$4,750.00 | | \$4,750.00 |
| 500 <u>Other Purchased Services</u> | | | | |
| 550 Printing and Binding | | 125.00 | | 125.00 |
| Total Other Purchased Services | | \$125.00 | | \$125.00 |
| 600 <u>Supplies</u> | | | | |
| 610 General Supplies | 208.00 | 733.00 | | 941.00 |
| 640 Books and Periodicals | | 292.00 | | 292.00 |
| Total Supplies | \$208.00 | \$1,025.00 | | \$1,233.00 |
| Total 2120 Guidance Services | \$281,115.00 | \$235,735.00 | | \$516,850.00 |

LEA : 122097203 Morrisville Borough SD

Printed 1/27/2020 4:05:23 PM

| | | | | |
|--|--------------------|---------------------|--------------------|---------------------|
| General Fund (10) | | | | |
| 2140 Psychological Services | <u>Elementary</u> | <u>Secondary</u> | <u>Federal</u> | <u>Total</u> |
| 100 <u>Personnel Services – Salaries</u> | | | | |
| 100 Personnel Services – Salaries | 14,265.00 | 51,189.00 | 43,000.00 | 108,454.00 |
| Total Personnel Services – Salaries | \$14,265.00 | \$51,189.00 | \$43,000.00 | \$108,454.00 |
| 200 <u>Personnel Services – Employee Benefits</u> | | | | |
| 210 Group Insurance – Contracted Provider | 1,898.00 | 6,779.00 | | 8,677.00 |
| 220 Social Security Contributions | 1,758.00 | 6,286.00 | | 8,044.00 |
| 230 PSERS Retirement Contributions | 7,546.00 | 27,918.00 | | 35,464.00 |
| 270 Group Insurance – Self-Insurance | 1,796.00 | 6,414.00 | | 8,210.00 |
| Total Personnel Services – Employee Benefits | \$12,998.00 | \$47,397.00 | | \$60,395.00 |
| 300 <u>Purchased Professional and Technical Services</u> | | | | |
| 330 Other Professional Services | | 4,750.00 | | 4,750.00 |
| Total Purchased Professional and Technical Services | | \$4,750.00 | | \$4,750.00 |
| 600 <u>Supplies</u> | | | | |
| 610 General Supplies | 363.00 | 230.00 | | 593.00 |
| Total Supplies | \$363.00 | \$230.00 | | \$593.00 |
| Total 2140 Psychological Services | \$27,626.00 | \$103,566.00 | \$43,000.00 | \$174,192.00 |

LEA : 122097203 Morrisville Borough SD

Printed 1/27/2020 4:05:23 PM

General Fund (10)

| 2170 Student Accounting Services | <u>Elementary</u> | <u>Secondary</u> | <u>Federal</u> | <u>Total</u> |
|---|-------------------|------------------|----------------|--------------|
| 100 <u>Personnel Services – Salaries</u> | | | | |
| 100 Personnel Services – Salaries | | | | 50,638.00 |
| Total Personnel Services – Salaries | | | | \$50,638.00 |
| 200 <u>Personnel Services – Employee Benefits</u> | | | | |
| 220 Social Security Contributions | | | | 3,775.00 |
| 230 PSERS Retirement Contributions | | | | 16,928.00 |
| 260 Workers’ Compensation | | | | 895.00 |
| 270 Group Insurance – Self-Insurance | | | | 23,834.00 |
| Total Personnel Services – Employee Benefits | | | | \$45,432.00 |
| Total 2170 Student Accounting Services | | | | \$96,070.00 |

LEA : 122097203 Morrisville Borough SD

Printed 1/27/2020 4:05:23 PM

| | | | | |
|--|---------------------|---------------------|----------------|---------------------|
| General Fund (10) | | | | |
| 2200 Support Services – Instructional Staff | <u>Elementary</u> | <u>Secondary</u> | <u>Federal</u> | <u>Total</u> |
| 100 <u>Personnel Services – Salaries</u> | | | | |
| 100 Personnel Services – Salaries | 47,500.00 | 99,433.00 | | 146,933.00 |
| Total Personnel Services – Salaries | \$47,500.00 | \$99,433.00 | | \$146,933.00 |
| 200 <u>Personnel Services – Employee Benefits</u> | | | | |
| 220 Social Security Contributions | 3,584.00 | 7,431.00 | | 11,015.00 |
| 230 PSERS Retirement Contributions | 15,879.00 | 32,573.00 | | 48,452.00 |
| 270 Group Insurance – Self-Insurance | 4,874.00 | 13,927.00 | | 18,801.00 |
| Total Personnel Services – Employee Benefits | \$24,337.00 | \$53,931.00 | | \$78,268.00 |
| 300 <u>Purchased Professional and Technical Services</u> | | | | |
| 330 Other Professional Services | 37,881.00 | 37,881.00 | | 75,762.00 |
| Total Purchased Professional and Technical Services | \$37,881.00 | \$37,881.00 | | \$75,762.00 |
| 500 <u>Other Purchased Services</u> | | | | |
| 580 Travel | 164.00 | | | 164.00 |
| Total Other Purchased Services | \$164.00 | | | \$164.00 |
| 600 <u>Supplies</u> | | | | |
| 610 General Supplies | 148.00 | | | 148.00 |
| Total Supplies | \$148.00 | | | \$148.00 |
| 800 <u>Other Objects</u> | | | | |
| 810 Dues and Fees | 242.00 | 242.00 | | 484.00 |
| Total Other Objects | \$242.00 | \$242.00 | | \$484.00 |
| Total 2200 Support Services – Instructional Staff | \$110,272.00 | \$191,487.00 | | \$301,759.00 |

LEA : 122097203 Morrisville Borough SD

Printed 1/27/2020 4:05:23 PM

General Fund (10)

| 2250 School Library Services | <u>Elementary</u> | <u>Secondary</u> | <u>Federal</u> | <u>Total</u> |
|--|-------------------|--------------------|----------------|--------------------|
| 100 <u>Personnel Services – Salaries</u> | | | | |
| 100 Personnel Services – Salaries | | 51,933.00 | | 51,933.00 |
| Total Personnel Services – Salaries | | \$51,933.00 | | \$51,933.00 |
| 200 <u>Personnel Services – Employee Benefits</u> | | | | |
| 220 Social Security Contributions | | 3,847.00 | | 3,847.00 |
| 230 PSERS Retirement Contributions | | 16,694.00 | | 16,694.00 |
| 270 Group Insurance – Self-Insurance | | 9,053.00 | | 9,053.00 |
| Total Personnel Services – Employee Benefits | | \$29,594.00 | | \$29,594.00 |
| 600 <u>Supplies</u> | | | | |
| 610 General Supplies | 148.00 | | | 148.00 |
| Total Supplies | \$148.00 | | | \$148.00 |
| Total 2250 School Library Services | \$148.00 | \$81,527.00 | | \$81,675.00 |

LEA : 122097203 Morrisville Borough SD

Printed 1/27/2020 4:05:23 PM

| | | | | |
|---|--------------------|--------------------|----------------|---------------------|
| General Fund (10) | | | | |
| 2260 Instruction and Curriculum Development Services | <u>Elementary</u> | <u>Secondary</u> | <u>Federal</u> | <u>Total</u> |
| 100 <u>Personnel Services – Salaries</u> | | | | |
| 100 Personnel Services – Salaries | 47,500.00 | 47,500.00 | | 95,000.00 |
| Total Personnel Services – Salaries | \$47,500.00 | \$47,500.00 | | \$95,000.00 |
| 200 <u>Personnel Services – Employee Benefits</u> | | | | |
| 220 Social Security Contributions | 3,584.00 | 3,584.00 | | 7,168.00 |
| 230 PSERS Retirement Contributions | 15,879.00 | 15,879.00 | | 31,758.00 |
| 270 Group Insurance – Self-Insurance | 4,874.00 | 4,874.00 | | 9,748.00 |
| Total Personnel Services – Employee Benefits | \$24,337.00 | \$24,337.00 | | \$48,674.00 |
| 800 <u>Other Objects</u> | | | | |
| 810 Dues and Fees | 242.00 | 242.00 | | 484.00 |
| Total Other Objects | \$242.00 | \$242.00 | | \$484.00 |
| Total 2260 Instruction and Curriculum Development Services | \$72,079.00 | \$72,079.00 | | \$144,158.00 |

LEA : 122097203 Morrisville Borough SD

Printed 1/27/2020 4:05:23 PM

General Fund (10)

| | | | | |
|--|-------------------|------------------|----------------|--------------|
| 2270 Instructional Staff Professional Development Services | <u>Elementary</u> | <u>Secondary</u> | <u>Federal</u> | <u>Total</u> |
| 300 <u>Purchased Professional and Technical Services</u> | | | | |
| 330 Other Professional Services | 37,881.00 | 37,881.00 | | 75,762.00 |
| Total Purchased Professional and Technical Services | \$37,881.00 | \$37,881.00 | | \$75,762.00 |
| 500 <u>Other Purchased Services</u> | | | | |
| 580 Travel | 164.00 | | | 164.00 |
| Total Other Purchased Services | \$164.00 | | | \$164.00 |
| Total 2270 Instructional Staff Professional Development Services | \$38,045.00 | \$37,881.00 | | \$75,926.00 |

LEA : 122097203 Morrisville Borough SD

Printed 1/27/2020 4:05:23 PM

| | | | | |
|--|---------------------|---------------------|----------------|-----------------------|
| General Fund (10) | | | | |
| 2300 Support Services – Administration | <u>Elementary</u> | <u>Secondary</u> | <u>Federal</u> | <u>Total</u> |
| 100 <u>Personnel Services – Salaries</u> | | | | |
| 100 Personnel Services – Salaries | 229,966.00 | 285,345.00 | | 666,756.00 |
| Total Personnel Services – Salaries | \$229,966.00 | \$285,345.00 | | \$666,756.00 |
| 200 <u>Personnel Services – Employee Benefits</u> | | | | |
| 220 Social Security Contributions | 17,650.00 | 21,265.00 | | 49,844.00 |
| 230 PSERS Retirement Contributions | 75,845.00 | 93,128.00 | | 218,323.00 |
| 260 Workers’ Compensation | 2,109.00 | 2,039.00 | | 6,125.00 |
| 270 Group Insurance – Self-Insurance | 24,653.00 | 72,411.00 | | 134,155.00 |
| Total Personnel Services – Employee Benefits | \$120,257.00 | \$188,843.00 | | \$408,447.00 |
| 300 <u>Purchased Professional and Technical Services</u> | | | | |
| 310 Official / Administrative Services | | | | 11,899.00 |
| 323 Professional Educational Services – Other Educational Agencies | | | | 10,000.00 |
| 330 Other Professional Services | | | | 23,750.00 |
| 340 Technical Services | | | | 138,210.00 |
| Total Purchased Professional and Technical Services | | | | \$183,859.00 |
| 400 <u>Purchased Property Services</u> | | | | |
| 440 Rentals | | | | 122.00 |
| Total Purchased Property Services | | | | \$122.00 |
| 500 <u>Other Purchased Services</u> | | | | |
| 520 Insurance – General | | | | 13,055.00 |
| 530 Communications | | 22.00 | | 22.00 |
| 541 Advertising Related to Federal Grant Awards | | | | 3,005.00 |
| 580 Travel | | 362.00 | | 4,643.00 |
| Total Other Purchased Services | | \$384.00 | | \$20,725.00 |
| 600 <u>Supplies</u> | | | | |
| 610 General Supplies | 322.00 | 1,278.00 | | 5,739.00 |
| 640 Books and Periodicals | | | | 162.00 |
| Total Supplies | \$322.00 | \$1,278.00 | | \$5,901.00 |
| 700 <u>Property</u> | | | | |
| 752 Capital Equipment – Original and Additional | | | | 1,428.00 |
| Total Property | | | | \$1,428.00 |
| 800 <u>Other Objects</u> | | | | |
| 810 Dues and Fees | | 2,018.00 | | 29,532.00 |
| Total Other Objects | | \$2,018.00 | | \$29,532.00 |
| Total 2300 Support Services – Administration | \$350,545.00 | \$477,868.00 | | \$1,316,770.00 |

LEA : 122097203 Morrisville Borough SD

Printed 1/27/2020 4:05:23 PM

| | | | | |
|--|-------------------|------------------|----------------|--------------|
| General Fund (10) | | | | |
| 2310 Board Services | | | | |
| | <u>Elementary</u> | <u>Secondary</u> | <u>Federal</u> | <u>Total</u> |
| 100 <u>Personnel Services – Salaries</u> | | | | |
| 100 Personnel Services – Salaries | | | | 8,000.00 |
| Total Personnel Services – Salaries | | | | \$8,000.00 |
| 200 <u>Personnel Services – Employee Benefits</u> | | | | |
| 220 Social Security Contributions | | | | 600.00 |
| 230 PSERS Retirement Contributions | | | | 2,675.00 |
| Total Personnel Services – Employee Benefits | | | | \$3,275.00 |
| 300 <u>Purchased Professional and Technical Services</u> | | | | |
| 323 Professional Educational Services – Other Educational Agencies | | | | 10,000.00 |
| 330 Other Professional Services | | | | 23,750.00 |
| Total Purchased Professional and Technical Services | | | | \$33,750.00 |
| 500 <u>Other Purchased Services</u> | | | | |
| 520 Insurance – General | | | | 13,055.00 |
| 541 Advertising Related to Federal Grant Awards | | | | 3,005.00 |
| Total Other Purchased Services | | | | \$16,060.00 |
| 600 <u>Supplies</u> | | | | |
| 610 General Supplies | | | | 2,397.00 |
| Total Supplies | | | | \$2,397.00 |
| 800 <u>Other Objects</u> | | | | |
| 810 Dues and Fees | | | | 21,700.00 |
| Total Other Objects | | | | \$21,700.00 |
| Total 2310 Board Services | | | | \$85,182.00 |

LEA : 122097203 Morrisville Borough SD

Printed 1/27/2020 4:05:23 PM

General Fund (10)

| | | | | |
|--|-------------------|------------------|----------------|--------------|
| 2330 Tax Assessment and Collection Services | <u>Elementary</u> | <u>Secondary</u> | <u>Federal</u> | <u>Total</u> |
| 300 <u>Purchased Professional and Technical Services</u> | | | | |
| 310 Official / Administrative Services | | | | 11,899.00 |
| Total Purchased Professional and Technical Services | | | | \$11,899.00 |
| Total 2330 Tax Assessment and Collection Services | | | | \$11,899.00 |

LEA : 122097203 Morrisville Borough SD

Printed 1/27/2020 4:05:23 PM

General Fund (10)

| | | | | |
|--|-------------------|------------------|----------------|--------------|
| 2350 Legal and Accounting Services | <u>Elementary</u> | <u>Secondary</u> | <u>Federal</u> | <u>Total</u> |
| 300 <u>Purchased Professional and Technical Services</u> | | | | |
| 340 Technical Services | | | | 138,210.00 |
| Total Purchased Professional and Technical Services | | | | \$138,210.00 |
| Total 2350 Legal and Accounting Services | | | | \$138,210.00 |

LEA : 122097203 Morrisville Borough SD

Printed 1/27/2020 4:05:23 PM

General Fund (10)

2360 Office of the Superintendent / Executive Director Services

Elementary Secondary Federal Total

| | | | |
|--|--|----------------|---------------------|
| 100 <u>Personnel Services – Salaries</u> | | | |
| 100 Personnel Services – Salaries | | | 143,445.00 |
| Total Personnel Services – Salaries | | | \$143,445.00 |
| 200 <u>Personnel Services – Employee Benefits</u> | | | |
| 220 Social Security Contributions | | | 10,329.00 |
| 230 PSERS Retirement Contributions | | | 46,675.00 |
| 260 Workers’ Compensation | | | 1,977.00 |
| 270 Group Insurance – Self-Insurance | | | 37,091.00 |
| Total Personnel Services – Employee Benefits | | | \$96,072.00 |
| 400 <u>Purchased Property Services</u> | | | |
| 440 Rentals | | | 122.00 |
| Total Purchased Property Services | | | \$122.00 |
| 500 <u>Other Purchased Services</u> | | | |
| 530 Communications | | 22.00 | 22.00 |
| 580 Travel | | | 4,281.00 |
| Total Other Purchased Services | | \$22.00 | \$4,303.00 |
| 600 <u>Supplies</u> | | | |
| 610 General Supplies | | | 1,742.00 |
| 640 Books and Periodicals | | | 162.00 |
| Total Supplies | | | \$1,904.00 |
| 700 <u>Property</u> | | | |
| 752 Capital Equipment – Original and Additional | | | 1,428.00 |
| Total Property | | | \$1,428.00 |
| 800 <u>Other Objects</u> | | | |
| 810 Dues and Fees | | | 5,814.00 |
| Total Other Objects | | | \$5,814.00 |
| Total 2360 Office of the Superintendent / Executive Director Services | | \$22.00 | \$253,088.00 |

LEA : 122097203 Morrisville Borough SD

Printed 1/27/2020 4:05:23 PM

| | | | | |
|---|---------------------|---------------------|----------------|---------------------|
| General Fund (10) | | | | |
| 2380 Office of the Principal Services | <u>Elementary</u> | <u>Secondary</u> | <u>Federal</u> | <u>Total</u> |
| 100 <u>Personnel Services – Salaries</u> | | | | |
| 100 Personnel Services – Salaries | 229,966.00 | 285,345.00 | | 515,311.00 |
| Total Personnel Services – Salaries | \$229,966.00 | \$285,345.00 | | \$515,311.00 |
| 200 <u>Personnel Services – Employee Benefits</u> | | | | |
| 220 Social Security Contributions | 17,650.00 | 21,265.00 | | 38,915.00 |
| 230 PSERS Retirement Contributions | 75,845.00 | 93,128.00 | | 168,973.00 |
| 260 Workers’ Compensation | 2,109.00 | 2,039.00 | | 4,148.00 |
| 270 Group Insurance – Self-Insurance | 24,653.00 | 72,411.00 | | 97,064.00 |
| Total Personnel Services – Employee Benefits | \$120,257.00 | \$188,843.00 | | \$309,100.00 |
| 500 <u>Other Purchased Services</u> | | | | |
| 580 Travel | | 362.00 | | 362.00 |
| Total Other Purchased Services | | \$362.00 | | \$362.00 |
| 600 <u>Supplies</u> | | | | |
| 610 General Supplies | 322.00 | 1,278.00 | | 1,600.00 |
| Total Supplies | \$322.00 | \$1,278.00 | | \$1,600.00 |
| 800 <u>Other Objects</u> | | | | |
| 810 Dues and Fees | | 2,018.00 | | 2,018.00 |
| Total Other Objects | | \$2,018.00 | | \$2,018.00 |
| Total 2380 Office of the Principal Services | \$350,545.00 | \$477,846.00 | | \$828,391.00 |

LEA : 122097203 Morrisville Borough SD

Printed 1/27/2020 4:05:23 PM

| | | | | |
|--|-------------------|------------------|----------------|--------------|
| General Fund (10) | | | | |
| 2400 Support Services – Pupil Health | <u>Elementary</u> | <u>Secondary</u> | <u>Federal</u> | <u>Total</u> |
| 100 <u>Personnel Services – Salaries</u> | | | | |
| 100 Personnel Services – Salaries | | | | 126,701.00 |
| Total Personnel Services – Salaries | | | | \$126,701.00 |
| 200 <u>Personnel Services – Employee Benefits</u> | | | | |
| 220 Social Security Contributions | | | | 9,742.00 |
| 230 PSERS Retirement Contributions | | | | 36,067.00 |
| 260 Workers’ Compensation | | | | 1,636.00 |
| 270 Group Insurance – Self-Insurance | | | | 10,552.00 |
| Total Personnel Services – Employee Benefits | | | | \$57,997.00 |
| 300 <u>Purchased Professional and Technical Services</u> | | | | |
| 330 Other Professional Services | | | | 115,634.00 |
| 340 Technical Services | | | | 5,050.00 |
| Total Purchased Professional and Technical Services | | | | \$120,684.00 |
| 600 <u>Supplies</u> | | | | |
| 610 General Supplies | | | | 4,199.00 |
| Total Supplies | | | | \$4,199.00 |
| 800 <u>Other Objects</u> | | | | |
| 810 Dues and Fees | | | | 99.00 |
| Total Other Objects | | | | \$99.00 |
| Total 2400 Support Services – Pupil Health | | | | \$309,680.00 |

LEA : 122097203 Morrisville Borough SD

Printed 1/27/2020 4:05:23 PM

| | | | | |
|--|-------------------|------------------|----------------|--------------|
| General Fund (10) | | | | |
| 2420 Medical Services | <u>Elementary</u> | <u>Secondary</u> | <u>Federal</u> | <u>Total</u> |
| 300 <u>Purchased Professional and Technical Services</u> | | | | |
| 330 Other Professional Services | | | | 115,634.00 |
| 340 Technical Services | | | | 3,050.00 |
| Total Purchased Professional and Technical Services | | | | \$118,684.00 |
| Total 2420 Medical Services | | | | \$118,684.00 |

LEA : 122097203 Morrisville Borough SD

Printed 1/27/2020 4:05:23 PM

General Fund (10)

2430 Dental Services

| <u>Elementary</u> | <u>Secondary</u> | <u>Federal</u> | <u>Total</u> |
|-------------------|------------------|----------------|--------------|
|-------------------|------------------|----------------|--------------|

300 Purchased Professional and Technical Services

| | | | |
|------------------------|--|--|----------|
| 340 Technical Services | | | 2,000.00 |
|------------------------|--|--|----------|

| | | | |
|--|--|--|-------------------|
| Total Purchased Professional and Technical Services | | | \$2,000.00 |
|--|--|--|-------------------|

| | | | |
|-----------------------------------|--|--|-------------------|
| Total 2430 Dental Services | | | \$2,000.00 |
|-----------------------------------|--|--|-------------------|

LEA : 122097203 Morrisville Borough SD

Printed 1/27/2020 4:05:23 PM

| | | | | |
|---|-------------------|------------------|----------------|--------------|
| General Fund (10) | | | | |
| 2440 Nursing Services | | | | |
| | <u>Elementary</u> | <u>Secondary</u> | <u>Federal</u> | <u>Total</u> |
| 100 <u>Personnel Services – Salaries</u> | | | | |
| 100 Personnel Services – Salaries | | | | 126,701.00 |
| Total Personnel Services – Salaries | | | | \$126,701.00 |
| 200 <u>Personnel Services – Employee Benefits</u> | | | | |
| 220 Social Security Contributions | | | | 9,742.00 |
| 230 PSERS Retirement Contributions | | | | 36,067.00 |
| 260 Workers’ Compensation | | | | 1,636.00 |
| 270 Group Insurance – Self-Insurance | | | | 10,552.00 |
| Total Personnel Services – Employee Benefits | | | | \$57,997.00 |
| 600 <u>Supplies</u> | | | | |
| 610 General Supplies | | | | 4,199.00 |
| Total Supplies | | | | \$4,199.00 |
| 800 <u>Other Objects</u> | | | | |
| 810 Dues and Fees | | | | 99.00 |
| Total Other Objects | | | | \$99.00 |
| Total 2440 Nursing Services | | | | \$188,996.00 |

LEA : 122097203 Morrisville Borough SD

Printed 1/27/2020 4:05:23 PM

| | | | | |
|--|-------------------|------------------|----------------|--------------|
| General Fund (10) | | | | |
| 2500 Support Services – Business | <u>Elementary</u> | <u>Secondary</u> | <u>Federal</u> | <u>Total</u> |
| 100 <u>Personnel Services – Salaries</u> | | | | |
| 100 Personnel Services – Salaries | | | | 305,903.00 |
| Total Personnel Services – Salaries | | | | \$305,903.00 |
| 200 <u>Personnel Services – Employee Benefits</u> | | | | |
| 210 Group Insurance – Contracted Provider | | | | 1,142.00 |
| 220 Social Security Contributions | | | | 23,086.00 |
| 230 PSERS Retirement Contributions | | | | 101,797.00 |
| 260 Workers' Compensation | | | | 1,592.00 |
| 270 Group Insurance – Self-Insurance | | | | 25,216.00 |
| 299 All Other Employee Benefits | | | | 1,535.00 |
| Total Personnel Services – Employee Benefits | | | | \$154,368.00 |
| 300 <u>Purchased Professional and Technical Services</u> | | | | |
| 310 Official / Administrative Services | | | | 33,754.00 |
| 340 Technical Services | | | | 60.00 |
| Total Purchased Professional and Technical Services | | | | \$33,814.00 |
| 400 <u>Purchased Property Services</u> | | | | |
| 430 Repairs and Maintenance Services | | | | 6,230.00 |
| Total Purchased Property Services | | | | \$6,230.00 |
| 500 <u>Other Purchased Services</u> | | | | |
| 530 Communications | | | | 116.00 |
| Total Other Purchased Services | | | | \$116.00 |
| 600 <u>Supplies</u> | | | | |
| 610 General Supplies | | | | 1,524.00 |
| Total Supplies | | | | \$1,524.00 |
| 700 <u>Property</u> | | | | |
| 762 Capitalized Equipment - Replacement | | | | 3,695.00 |
| Total Property | | | | \$3,695.00 |
| 800 <u>Other Objects</u> | | | | |
| 810 Dues and Fees | | | | 11,895.00 |
| Total Other Objects | | | | \$11,895.00 |
| Total 2500 Support Services – Business | | | | \$517,545.00 |

LEA : 122097203 Morrisville Borough SD

Printed 1/27/2020 4:05:23 PM

| | | | | |
|--|-------------------|------------------|----------------|--------------|
| General Fund (10) | | | | |
| 2510 Fiscal Services | <u>Elementary</u> | <u>Secondary</u> | <u>Federal</u> | <u>Total</u> |
| 100 <u>Personnel Services – Salaries</u> | | | | |
| 100 Personnel Services – Salaries | | | | 305,903.00 |
| Total Personnel Services – Salaries | | | | \$305,903.00 |
| 200 <u>Personnel Services – Employee Benefits</u> | | | | |
| 210 Group Insurance – Contracted Provider | | | | 1,142.00 |
| 220 Social Security Contributions | | | | 23,086.00 |
| 230 PSERS Retirement Contributions | | | | 101,797.00 |
| 260 Workers' Compensation | | | | 1,592.00 |
| 270 Group Insurance – Self-Insurance | | | | 25,216.00 |
| 299 All Other Employee Benefits | | | | 1,535.00 |
| Total Personnel Services – Employee Benefits | | | | \$154,368.00 |
| 300 <u>Purchased Professional and Technical Services</u> | | | | |
| 310 Official / Administrative Services | | | | 33,754.00 |
| 340 Technical Services | | | | 60.00 |
| Total Purchased Professional and Technical Services | | | | \$33,814.00 |
| 400 <u>Purchased Property Services</u> | | | | |
| 430 Repairs and Maintenance Services | | | | 6,230.00 |
| Total Purchased Property Services | | | | \$6,230.00 |
| 500 <u>Other Purchased Services</u> | | | | |
| 530 Communications | | | | 116.00 |
| Total Other Purchased Services | | | | \$116.00 |
| 600 <u>Supplies</u> | | | | |
| 610 General Supplies | | | | 1,524.00 |
| Total Supplies | | | | \$1,524.00 |
| 700 <u>Property</u> | | | | |
| 762 Capitalized Equipment - Replacement | | | | 3,695.00 |
| Total Property | | | | \$3,695.00 |
| 800 <u>Other Objects</u> | | | | |
| 810 Dues and Fees | | | | 11,895.00 |
| Total Other Objects | | | | \$11,895.00 |
| Total 2510 Fiscal Services | | | | \$517,545.00 |

LEA : 122097203 Morrisville Borough SD

Printed 1/27/2020 4:05:23 PM

| | | | | |
|---|-------------------|------------------|----------------|--------------|
| General Fund (10) | | | | |
| 2511 Supervision of Fiscal Services - Head of Component | <u>Elementary</u> | <u>Secondary</u> | <u>Federal</u> | <u>Total</u> |
| 100 <u>Personnel Services – Salaries</u> | | | | |
| 100 Personnel Services – Salaries | | | | 171,269.00 |
| Total Personnel Services – Salaries | | | | \$171,269.00 |
| 200 <u>Personnel Services – Employee Benefits</u> | | | | |
| 220 Social Security Contributions | | | | 12,990.00 |
| 230 PSERS Retirement Contributions | | | | 57,255.00 |
| 260 Workers’ Compensation | | | | 1,610.00 |
| Total Personnel Services – Employee Benefits | | | | \$71,855.00 |
| 300 <u>Purchased Professional and Technical Services</u> | | | | |
| 310 Official / Administrative Services | | | | 33,754.00 |
| 340 Technical Services | | | | 60.00 |
| Total Purchased Professional and Technical Services | | | | \$33,814.00 |
| 400 <u>Purchased Property Services</u> | | | | |
| 430 Repairs and Maintenance Services | | | | 6,230.00 |
| Total Purchased Property Services | | | | \$6,230.00 |
| 500 <u>Other Purchased Services</u> | | | | |
| 530 Communications | | | | 116.00 |
| Total Other Purchased Services | | | | \$116.00 |
| 600 <u>Supplies</u> | | | | |
| 610 General Supplies | | | | 1,524.00 |
| Total Supplies | | | | \$1,524.00 |
| 700 <u>Property</u> | | | | |
| 762 Capitalized Equipment - Replacement | | | | 3,695.00 |
| Total Property | | | | \$3,695.00 |
| 800 <u>Other Objects</u> | | | | |
| 810 Dues and Fees | | | | 11,895.00 |
| Total Other Objects | | | | \$11,895.00 |
| Total 2511 Supervision of Fiscal Services - Head of Component | | | | \$300,398.00 |

LEA : 122097203 Morrisville Borough SD

Printed 1/27/2020 4:05:23 PM

General Fund (10)

| 2513 Receiving and Disbursing Funds Services | <u>Elementary</u> | <u>Secondary</u> | <u>Federal</u> | <u>Total</u> |
|--|-------------------|------------------|----------------|--------------|
| 100 <u>Personnel Services – Salaries</u> | | | | |
| 100 Personnel Services – Salaries | | | | 52,412.00 |
| Total Personnel Services – Salaries | | | | \$52,412.00 |
| 200 <u>Personnel Services – Employee Benefits</u> | | | | |
| 220 Social Security Contributions | | | | 3,958.00 |
| 230 PSERS Retirement Contributions | | | | 17,390.00 |
| 270 Group Insurance – Self-Insurance | | | | 6,158.00 |
| Total Personnel Services – Employee Benefits | | | | \$27,506.00 |
| Total 2513 Receiving and Disbursing Funds Services | | | | \$79,918.00 |

LEA : 122097203 Morrisville Borough SD

Printed 1/27/2020 4:05:23 PM

General Fund (10)

2514 Payroll Services

| | <u>Elementary</u> | <u>Secondary</u> | <u>Federal</u> | <u>Total</u> |
|--|-------------------|------------------|----------------|---------------------|
| 100 <u>Personnel Services – Salaries</u> | | | | |
| 100 Personnel Services – Salaries | | | | 58,222.00 |
| Total Personnel Services – Salaries | | | | \$58,222.00 |
| 200 <u>Personnel Services – Employee Benefits</u> | | | | |
| 220 Social Security Contributions | | | | 4,302.00 |
| 230 PSERS Retirement Contributions | | | | 19,129.00 |
| 270 Group Insurance – Self-Insurance | | | | 18,067.00 |
| 299 All Other Employee Benefits | | | | 1,535.00 |
| Total Personnel Services – Employee Benefits | | | | \$43,033.00 |
| Total 2514 Payroll Services | | | | \$101,255.00 |

LEA : 122097203 Morrisville Borough SD

Printed 1/27/2020 4:05:23 PM

General Fund (10)

| 2519 Other Fiscal Services | <u>Elementary</u> | <u>Secondary</u> | <u>Federal</u> | <u>Total</u> |
|---|-------------------|------------------|----------------|--------------------|
| 100 <u>Personnel Services – Salaries</u> | | | | |
| 100 Personnel Services – Salaries | | | | 24,000.00 |
| Total Personnel Services – Salaries | | | | \$24,000.00 |
| 200 <u>Personnel Services – Employee Benefits</u> | | | | |
| 210 Group Insurance – Contracted Provider | | | | 1,142.00 |
| 220 Social Security Contributions | | | | 1,836.00 |
| 230 PSERS Retirement Contributions | | | | 8,023.00 |
| 260 Workers' Compensation | | | | (18.00) |
| 270 Group Insurance – Self-Insurance | | | | 991.00 |
| Total Personnel Services – Employee Benefits | | | | \$11,974.00 |
| Total 2519 Other Fiscal Services | | | | \$35,974.00 |

LEA : 122097203 Morrisville Borough SD

Printed 1/27/2020 4:05:23 PM

| | | | | |
|--|-------------------|------------------|----------------|----------------|
| General Fund (10) | | | | |
| 2600 Operation and Maintenance of Plant Services | <u>Elementary</u> | <u>Secondary</u> | <u>Federal</u> | <u>Total</u> |
| 100 <u>Personnel Services – Salaries</u> | | | | |
| 100 Personnel Services – Salaries | | | | 455,672.00 |
| Total Personnel Services – Salaries | | | | \$455,672.00 |
| 200 <u>Personnel Services – Employee Benefits</u> | | | | |
| 220 Social Security Contributions | | | | 35,258.00 |
| 230 PSERS Retirement Contributions | | | | 149,874.00 |
| 260 Workers’ Compensation | | | | 4,579.00 |
| 270 Group Insurance – Self-Insurance | | | | 136,530.00 |
| Total Personnel Services – Employee Benefits | | | | \$326,241.00 |
| 300 <u>Purchased Professional and Technical Services</u> | | | | |
| 390 Other Purchased Professional and Technical Services | | | | 47,935.00 |
| Total Purchased Professional and Technical Services | | | | \$47,935.00 |
| 400 <u>Purchased Property Services</u> | | | | |
| 410 Cleaning Services | | | | 114,984.00 |
| 420 Utility Services | | | | 141,276.00 |
| 430 Repairs and Maintenance Services | | | | 153,195.00 |
| 440 Rentals | | | | 42,041.00 |
| 460 Extermination Services | | | | 4,965.00 |
| Total Purchased Property Services | | | | \$456,461.00 |
| 500 <u>Other Purchased Services</u> | | | | |
| 523 General Property and Liability Insurance | | | | 82,405.00 |
| 530 Communications | | | | 35,035.00 |
| Total Other Purchased Services | | | | \$117,440.00 |
| 600 <u>Supplies</u> | | | | |
| 610 General Supplies | 20,360.00 | 20,360.00 | | 40,720.00 |
| 620 Energy | | | | 63,549.00 |
| Total Supplies | \$20,360.00 | \$20,360.00 | | \$104,269.00 |
| 700 <u>Property</u> | | | | |
| 752 Capital Equipment – Original and Additional | | | | 8,550.00 |
| 762 Capitalized Equipment - Replacement | | | | 8,558.00 |
| Total Property | | | | \$17,108.00 |
| Total 2600 Operation and Maintenance of Plant Services | \$20,360.00 | \$20,360.00 | | \$1,525,126.00 |

LEA : 122097203 Morrisville Borough SD

Printed 1/27/2020 4:05:23 PM

General Fund (10)

| | | | | |
|---|-------------------|------------------|----------------|--------------|
| 2610 Supervision of Operation and Maintenance of Plant Services | <u>Elementary</u> | <u>Secondary</u> | <u>Federal</u> | <u>Total</u> |
| 100 <u>Personnel Services – Salaries</u> | | | | |
| 100 Personnel Services – Salaries | | | | 67,753.00 |
| Total Personnel Services – Salaries | | | | \$67,753.00 |
| 200 <u>Personnel Services – Employee Benefits</u> | | | | |
| 220 Social Security Contributions | | | | 5,184.00 |
| 230 PSERS Retirement Contributions | | | | 22,050.00 |
| Total Personnel Services – Employee Benefits | | | | \$27,234.00 |
| Total 2610 Supervision of Operation and Maintenance of Plant Services | | | | \$94,987.00 |

LEA : 122097203 Morrisville Borough SD

Printed 1/27/2020 4:05:23 PM

General Fund (10)

| 2611 Supervision of Operation and Maintenance of Plant Services – Head of Component | <u>Elementary</u> | <u>Secondary</u> | <u>Federal</u> | <u>Total</u> |
|--|-------------------|------------------|----------------|--------------------|
| 100 <u>Personnel Services – Salaries</u> | | | | |
| 100 Personnel Services – Salaries | | | | 67,753.00 |
| Total Personnel Services – Salaries | | | | \$67,753.00 |
| 200 <u>Personnel Services – Employee Benefits</u> | | | | |
| 220 Social Security Contributions | | | | 5,184.00 |
| 230 PSERS Retirement Contributions | | | | 22,050.00 |
| Total Personnel Services – Employee Benefits | | | | \$27,234.00 |
| Total 2611 Supervision of Operation and Maintenance of Plant Services – Head of Component | | | | \$94,987.00 |

LEA : 122097203 Morrisville Borough SD

Printed 1/27/2020 4:05:23 PM

| | | | | |
|---|--------------------|--------------------|----------------|-----------------------|
| General Fund (10) | | | | |
| 2620 Operation of Buildings Services | <u>Elementary</u> | <u>Secondary</u> | <u>Federal</u> | <u>Total</u> |
| 100 <u>Personnel Services – Salaries</u> | | | | |
| 100 Personnel Services – Salaries | | | | 387,919.00 |
| Total Personnel Services – Salaries | | | | \$387,919.00 |
| 200 <u>Personnel Services – Employee Benefits</u> | | | | |
| 220 Social Security Contributions | | | | 30,074.00 |
| 230 PSERS Retirement Contributions | | | | 127,824.00 |
| 260 Workers’ Compensation | | | | 4,579.00 |
| 270 Group Insurance – Self-Insurance | | | | 136,530.00 |
| Total Personnel Services – Employee Benefits | | | | \$299,007.00 |
| 400 <u>Purchased Property Services</u> | | | | |
| 410 Cleaning Services | | | | 97,481.00 |
| 420 Utility Services | | | | 141,276.00 |
| 430 Repairs and Maintenance Services | | | | 153,195.00 |
| 440 Rentals | | | | 42,041.00 |
| 460 Extermination Services | | | | 4,965.00 |
| Total Purchased Property Services | | | | \$438,958.00 |
| 500 <u>Other Purchased Services</u> | | | | |
| 523 General Property and Liability Insurance | | | | 82,405.00 |
| 530 Communications | | | | 35,035.00 |
| Total Other Purchased Services | | | | \$117,440.00 |
| 600 <u>Supplies</u> | | | | |
| 610 General Supplies | 20,360.00 | 20,360.00 | | 40,720.00 |
| 620 Energy | | | | 63,549.00 |
| Total Supplies | \$20,360.00 | \$20,360.00 | | \$104,269.00 |
| 700 <u>Property</u> | | | | |
| 752 Capital Equipment – Original and Additional | | | | 8,550.00 |
| 762 Capitalized Equipment - Replacement | | | | 8,558.00 |
| Total Property | | | | \$17,108.00 |
| Total 2620 Operation of Buildings Services | \$20,360.00 | \$20,360.00 | | \$1,364,701.00 |

LEA : 122097203 Morrisville Borough SD

Printed 1/27/2020 4:05:23 PM

| | | | | |
|--|-------------------|------------------|----------------|--------------|
| General Fund (10) | | | | |
| 2630 Care and Upkeep of Grounds Services | <u>Elementary</u> | <u>Secondary</u> | <u>Federal</u> | <u>Total</u> |
| 400 <u>Purchased Property Services</u> | | | | |
| 410 Cleaning Services | | | | 17,503.00 |
| Total Purchased Property Services | | | | \$17,503.00 |
| Total 2630 Care and Upkeep of Grounds Services | | | | \$17,503.00 |

LEA : 122097203 Morrisville Borough SD

Printed 1/27/2020 4:05:23 PM

| | | | | |
|--|-------------------|------------------|----------------|--------------|
| General Fund (10) | | | | |
| 2660 Safety and Security Services | <u>Elementary</u> | <u>Secondary</u> | <u>Federal</u> | <u>Total</u> |
| 300 <u>Purchased Professional and Technical Services</u> | | | | |
| 390 Other Purchased Professional and Technical Services | | | | 47,935.00 |
| Total Purchased Professional and Technical Services | | | | \$47,935.00 |
| Total 2660 Safety and Security Services | | | | \$47,935.00 |

LEA : 122097203 Morrisville Borough SD

Printed 1/27/2020 4:05:23 PM

| | | | | |
|---|-------------------|------------------|----------------|--------------|
| General Fund (10) | | | | |
| 2700 Student Transportation Services | <u>Elementary</u> | <u>Secondary</u> | <u>Federal</u> | <u>Total</u> |
| 100 <u>Personnel Services – Salaries</u> | | | | |
| 100 Personnel Services – Salaries | | | | 36,208.00 |
| Total Personnel Services – Salaries | | | | \$36,208.00 |
| 200 <u>Personnel Services – Employee Benefits</u> | | | | |
| 220 Social Security Contributions | | | | 3,209.00 |
| 230 PSERS Retirement Contributions | | | | 12,104.00 |
| 260 Workers’ Compensation | | | | 697.00 |
| 270 Group Insurance – Self-Insurance | | | | 6,756.00 |
| Total Personnel Services – Employee Benefits | | | | \$22,766.00 |
| 500 <u>Other Purchased Services</u> | | | | |
| 513 Contracted Carriers | | | | 58,526.00 |
| 516 Student Transportation Services From the IU | | | 44,192.00 | 478,069.00 |
| Total Other Purchased Services | | | \$44,192.00 | \$536,595.00 |
| 600 <u>Supplies</u> | | | | |
| 620 Energy | | | | 7,310.00 |
| Total Supplies | | | | \$7,310.00 |
| 700 <u>Property</u> | | | | |
| 752 Capital Equipment – Original and Additional | | | | 1,619.00 |
| Total Property | | | | \$1,619.00 |
| Total 2700 Student Transportation Services | | | \$44,192.00 | \$604,498.00 |

LEA : 122097203 Morrisville Borough SD

Printed 1/27/2020 4:05:23 PM

| | | | | |
|---|-------------------|------------------|----------------|--------------|
| General Fund (10) | | | | |
| 2720 Vehicle Operation Services | | | | |
| | <u>Elementary</u> | <u>Secondary</u> | <u>Federal</u> | <u>Total</u> |
| 100 <u>Personnel Services – Salaries</u> | | | | |
| 100 Personnel Services – Salaries | | | | 36,208.00 |
| Total Personnel Services – Salaries | | | | \$36,208.00 |
| 200 <u>Personnel Services – Employee Benefits</u> | | | | |
| 220 Social Security Contributions | | | | 3,209.00 |
| 230 PSERS Retirement Contributions | | | | 12,104.00 |
| 260 Workers’ Compensation | | | | 697.00 |
| 270 Group Insurance – Self-Insurance | | | | 6,756.00 |
| Total Personnel Services – Employee Benefits | | | | \$22,766.00 |
| 500 <u>Other Purchased Services</u> | | | | |
| 513 Contracted Carriers | | | | 58,526.00 |
| 516 Student Transportation Services From the IU | | | 44,192.00 | 478,069.00 |
| Total Other Purchased Services | | | \$44,192.00 | \$536,595.00 |
| 600 <u>Supplies</u> | | | | |
| 620 Energy | | | | 7,310.00 |
| Total Supplies | | | | \$7,310.00 |
| 700 <u>Property</u> | | | | |
| 752 Capital Equipment – Original and Additional | | | | 1,619.00 |
| Total Property | | | | \$1,619.00 |
| Total 2720 Vehicle Operation Services | | | \$44,192.00 | \$604,498.00 |

LEA : 122097203 Morrisville Borough SD

Printed 1/27/2020 4:05:23 PM

| | | | | |
|--|-------------------|------------------|----------------|--------------|
| General Fund (10) | | | | |
| 2800 Support Services – Central | <u>Elementary</u> | <u>Secondary</u> | <u>Federal</u> | <u>Total</u> |
| 100 <u>Personnel Services – Salaries</u> | | | | |
| 100 Personnel Services – Salaries | | | | 174,205.00 |
| Total Personnel Services – Salaries | | | | \$174,205.00 |
| 200 <u>Personnel Services – Employee Benefits</u> | | | | |
| 220 Social Security Contributions | | | | 12,872.00 |
| 230 PSERS Retirement Contributions | | | | 56,912.00 |
| 270 Group Insurance – Self-Insurance | | | | 80,756.00 |
| 299 All Other Employee Benefits | | | | (2,250.00) |
| Total Personnel Services – Employee Benefits | | | | \$148,290.00 |
| 300 <u>Purchased Professional and Technical Services</u> | | | | |
| 340 Technical Services | | | | 8,054.00 |
| Total Purchased Professional and Technical Services | | | | \$8,054.00 |
| 500 <u>Other Purchased Services</u> | | | | |
| 580 Travel | | | | 527.00 |
| Total Other Purchased Services | | | | \$527.00 |
| 600 <u>Supplies</u> | | | | |
| 610 General Supplies | | | | 178.00 |
| 640 Books and Periodicals | | | | 99,351.00 |
| Total Supplies | | | | \$99,529.00 |
| 700 <u>Property</u> | | | | |
| 752 Capital Equipment – Original and Additional | | | | 20,471.00 |
| Total Property | | | | \$20,471.00 |
| Total 2800 Support Services – Central | | | | \$451,076.00 |

LEA : 122097203 Morrisville Borough SD

Printed 1/27/2020 4:05:23 PM

| | | | | |
|--|-------------------|------------------|----------------|--------------|
| General Fund (10) | | | | |
| 2810 Planning, Research, Development and Evaluation Services | <u>Elementary</u> | <u>Secondary</u> | <u>Federal</u> | <u>Total</u> |
| 100 <u>Personnel Services – Salaries</u> | | | | |
| 100 Personnel Services – Salaries | | | | 121,165.00 |
| Total Personnel Services – Salaries | | | | \$121,165.00 |
| 200 <u>Personnel Services – Employee Benefits</u> | | | | |
| 220 Social Security Contributions | | | | 8,966.00 |
| 230 PSERS Retirement Contributions | | | | 39,181.00 |
| 270 Group Insurance – Self-Insurance | | | | 62,688.00 |
| Total Personnel Services – Employee Benefits | | | | \$110,835.00 |
| 300 <u>Purchased Professional and Technical Services</u> | | | | |
| 340 Technical Services | | | | 8,054.00 |
| Total Purchased Professional and Technical Services | | | | \$8,054.00 |
| 500 <u>Other Purchased Services</u> | | | | |
| 580 Travel | | | | 527.00 |
| Total Other Purchased Services | | | | \$527.00 |
| 600 <u>Supplies</u> | | | | |
| 610 General Supplies | | | | 178.00 |
| 640 Books and Periodicals | | | | 99,351.00 |
| Total Supplies | | | | \$99,529.00 |
| 700 <u>Property</u> | | | | |
| 752 Capital Equipment – Original and Additional | | | | 20,471.00 |
| Total Property | | | | \$20,471.00 |
| Total 2810 Planning, Research, Development and Evaluation Services | | | | \$360,581.00 |

LEA : 122097203 Morrisville Borough SD

Printed 1/27/2020 4:05:23 PM

General Fund (10)

2830 Staff Services

| | <u>Elementary</u> | <u>Secondary</u> | <u>Federal</u> | <u>Total</u> |
|--|-------------------|------------------|----------------|--------------------|
| 100 <u>Personnel Services – Salaries</u> | | | | |
| 100 Personnel Services – Salaries | | | | 53,040.00 |
| Total Personnel Services – Salaries | | | | \$53,040.00 |
| 200 <u>Personnel Services – Employee Benefits</u> | | | | |
| 220 Social Security Contributions | | | | 3,906.00 |
| 230 PSERS Retirement Contributions | | | | 17,731.00 |
| 270 Group Insurance – Self-Insurance | | | | 18,068.00 |
| 299 All Other Employee Benefits | | | | (2,250.00) |
| Total Personnel Services – Employee Benefits | | | | \$37,455.00 |
| Total 2830 Staff Services | | | | \$90,495.00 |

LEA : 122097203 Morrisville Borough SD

Printed 1/27/2020 4:05:23 PM

General Fund (10)

| 2833 Staff Accounting Services | <u>Elementary</u> | <u>Secondary</u> | <u>Federal</u> | <u>Total</u> |
|---|-------------------|------------------|----------------|--------------|
| 100 <u>Personnel Services – Salaries</u> | | | | |
| 100 Personnel Services – Salaries | | | | 53,040.00 |
| Total Personnel Services – Salaries | | | | \$53,040.00 |
| 200 <u>Personnel Services – Employee Benefits</u> | | | | |
| 220 Social Security Contributions | | | | 3,906.00 |
| 230 PSERS Retirement Contributions | | | | 17,731.00 |
| 270 Group Insurance – Self-Insurance | | | | 18,068.00 |
| 299 All Other Employee Benefits | | | | (2,250.00) |
| Total Personnel Services – Employee Benefits | | | | \$37,455.00 |
| Total 2833 Staff Accounting Services | | | | \$90,495.00 |

LEA : 122097203 Morrisville Borough SD

Printed 1/27/2020 4:05:23 PM

General Fund (10)

| | | | | |
|---|-------------------|------------------|----------------|--------------|
| 2900 Other Support Services | <u>Elementary</u> | <u>Secondary</u> | <u>Federal</u> | <u>Total</u> |
| 500 <u>Other Purchased Services</u> | | | | |
| 595 IU Payments By Withholding | | | | 5,512.00 |
| Total Other Purchased Services | | | | \$5,512.00 |
| 700 <u>Property</u> | | | | |
| 762 Capitalized Equipment - Replacement | | | 44,769.00 | 44,769.00 |
| Total Property | | | \$44,769.00 | \$44,769.00 |
| Total 2900 Other Support Services | | | \$44,769.00 | \$50,281.00 |

LEA : 122097203 Morrisville Borough SD

Printed 1/27/2020 4:05:23 PM

General Fund (10)

| | | | | | |
|---|--|-------------------|------------------|----------------|--------------|
| 2910 Support Services Not Listed Elsewhere In the 2000 Series | | <u>Elementary</u> | <u>Secondary</u> | <u>Federal</u> | <u>Total</u> |
| 500 <u>Other Purchased Services</u> | | | | | |
| 595 IU Payments By Withholding | | | | | 5,512.00 |
| Total Other Purchased Services | | | | | \$5,512.00 |
| 700 <u>Property</u> | | | | | |
| 762 Capitalized Equipment - Replacement | | | | 44,769.00 | 44,769.00 |
| Total Property | | | | \$44,769.00 | \$44,769.00 |
| Total 2910 Support Services Not Listed Elsewhere In the 2000 Series | | | | \$44,769.00 | \$50,281.00 |

LEA : 122097203 Morrisville Borough SD

Printed 1/27/2020 4:05:29 PM

| | |
|---|---------------------|
| General Fund (10) | |
| 3000 Operation of Non-Instructional Services | <u>Total</u> |
| 100 <u>Personnel Services – Salaries</u> | |
| 100 Personnel Services – Salaries | 126,542.00 |
| Total Personnel Services – Salaries | \$126,542.00 |
| 200 <u>Personnel Services – Employee Benefits</u> | |
| 220 Social Security Contributions | 9,655.00 |
| 230 PSERS Retirement Contributions | 40,464.00 |
| Total Personnel Services – Employee Benefits | \$50,119.00 |
| 300 <u>Purchased Professional and Technical Services</u> | |
| 310 Official / Administrative Services | 66,780.00 |
| 329 Professional Educational Services – Other | 150.00 |
| 390 Other Purchased Professional and Technical Services | 68,672.00 |
| Total Purchased Professional and Technical Services | \$135,602.00 |
| 400 <u>Purchased Property Services</u> | |
| 430 Repairs and Maintenance Services | 17,929.00 |
| Total Purchased Property Services | \$17,929.00 |
| 500 <u>Other Purchased Services</u> | |
| 510 Student Transportation Services | 67,646.00 |
| 520 Insurance – General | 6,674.00 |
| 580 Travel | 4,972.00 |
| Total Other Purchased Services | \$79,292.00 |
| 600 <u>Supplies</u> | |
| 610 General Supplies | 52,744.00 |
| Total Supplies | \$52,744.00 |
| 800 <u>Other Objects</u> | |
| 810 Dues and Fees | 10,044.00 |
| Total Other Objects | \$10,044.00 |
| Total 3000 Operation of Non-Instructional Services | \$472,272.00 |

LEA : 122097203 Morrisville Borough SD

Printed 1/27/2020 4:05:29 PM

| | | | | |
|--|-------------------|------------------|----------------|--------------|
| General Fund (10) | | | | |
| 3200 Student Activities | <u>Elementary</u> | <u>Secondary</u> | <u>Federal</u> | <u>Total</u> |
| 100 <u>Personnel Services – Salaries</u> | | | | |
| 100 Personnel Services – Salaries | | | | 126,542.00 |
| Total Personnel Services – Salaries | | | | \$126,542.00 |
| 200 <u>Personnel Services – Employee Benefits</u> | | | | |
| 220 Social Security Contributions | | | | 9,655.00 |
| 230 PSERS Retirement Contributions | | | | 40,464.00 |
| Total Personnel Services – Employee Benefits | | | | \$50,119.00 |
| 300 <u>Purchased Professional and Technical Services</u> | | | | |
| 310 Official / Administrative Services | | | | 66,780.00 |
| Total Purchased Professional and Technical Services | | | | \$66,780.00 |
| 400 <u>Purchased Property Services</u> | | | | |
| 430 Repairs and Maintenance Services | | | | 17,929.00 |
| Total Purchased Property Services | | | | \$17,929.00 |
| 500 <u>Other Purchased Services</u> | | | | |
| 510 Student Transportation Services | | | | 67,646.00 |
| 520 Insurance – General | | | | 6,674.00 |
| 580 Travel | | | | 4,972.00 |
| Total Other Purchased Services | | | | \$79,292.00 |
| 600 <u>Supplies</u> | | | | |
| 610 General Supplies | | | | 52,744.00 |
| Total Supplies | | | | \$52,744.00 |
| 800 <u>Other Objects</u> | | | | |
| 810 Dues and Fees | | | | 10,044.00 |
| Total Other Objects | | | | \$10,044.00 |
| Total 3200 Student Activities | | | | \$403,450.00 |

LEA : 122097203 Morrisville Borough SD

Printed 1/27/2020 4:05:29 PM

General Fund (10)

3300 Community Services

| | <u>Elementary</u> | <u>Secondary</u> | <u>Federal</u> | <u>Total</u> |
|--|-------------------|------------------|-----------------|--------------------|
| 300 <u>Purchased Professional and Technical Services</u> | | | | |
| 329 Professional Educational Services – Other | | | 150.00 | 150.00 |
| 390 Other Purchased Professional and Technical Services | | | | 68,672.00 |
| Total Purchased Professional and Technical Services | | | \$150.00 | \$68,822.00 |
| Total 3300 Community Services | | | \$150.00 | \$68,822.00 |

LEA : 122097203 Morrisville Borough SD

Printed 1/27/2020 4:05:35 PM

General Fund (10)

5000 Other Expenditures and Financing Uses

Total

| | |
|--|----------------|
| 800 <u>Other Objects</u> | |
| 830 Interest | 211,331.00 |
| Total Other Objects | \$211,331.00 |
| 900 <u>Other Uses of Funds</u> | |
| 910 Redemption of Principal | 660,000.00 |
| 920 Authority Obligations | 82,442.00 |
| 932 Capital Reserve Fund Transfers Applicable To Fund 32 | 150,000.00 |
| Total Other Uses of Funds | \$892,442.00 |
| Total 5000 Other Expenditures and Financing Uses | \$1,103,773.00 |

LEA : 122097203 Morrisville Borough SD

Printed 1/27/2020 4:05:35 PM

| | | | | |
|---|-------------------|------------------|----------------|--------------|
| General Fund (10) | | | | |
| 5100 Debt Service / Other Expenditures and Financing Uses | <u>Elementary</u> | <u>Secondary</u> | <u>Federal</u> | <u>Total</u> |
| 800 <u>Other Objects</u> | | | | |
| 830 Interest | | | | 211,331.00 |
| Total Other Objects | | | | \$211,331.00 |
| 900 <u>Other Uses of Funds</u> | | | | |
| 910 Redemption of Principal | | | | 660,000.00 |
| 920 Authority Obligations | | | | 82,442.00 |
| Total Other Uses of Funds | | | | \$742,442.00 |
| Total 5100 Debt Service / Other Expenditures and Financing Uses | | | | \$953,773.00 |

LEA : 122097203 Morrisville Borough SD

Printed 1/27/2020 4:05:35 PM

| | | | | |
|--------------------------------|-------------------|------------------|----------------|--------------|
| General Fund (10) | | | | |
| 5110 Debt Service | <u>Elementary</u> | <u>Secondary</u> | <u>Federal</u> | <u>Total</u> |
| 800 <u>Other Objects</u> | | | | |
| 830 Interest | | | | 211,331.00 |
| Total Other Objects | | | | \$211,331.00 |
| 900 <u>Other Uses of Funds</u> | | | | |
| 910 Redemption of Principal | | | | 660,000.00 |
| 920 Authority Obligations | | | | 82,442.00 |
| Total Other Uses of Funds | | | | \$742,442.00 |
| Total 5110 Debt Service | | | | \$953,773.00 |

LEA : 122097203 Morrisville Borough SD

Printed 1/27/2020 4:05:35 PM

General Fund (10)

| | | | | |
|--|-------------------|------------------|----------------|--------------|
| 5200 Interfund Transfers – Out | <u>Elementary</u> | <u>Secondary</u> | <u>Federal</u> | <u>Total</u> |
| 900 <u>Other Uses of Funds</u> | | | | |
| 932 Capital Reserve Fund Transfers Applicable To Fund 32 | | | | 150,000.00 |
| Total Other Uses of Funds | | | | \$150,000.00 |
| Total 5200 Interfund Transfers – Out | | | | \$150,000.00 |

LEA : 122097203 Morrisville Borough SD

Printed 1/27/2020 4:05:35 PM

General Fund (10)

| | | | | |
|--|-------------------|------------------|----------------|--------------|
| 5230 Capital Projects Fund Transfers | <u>Elementary</u> | <u>Secondary</u> | <u>Federal</u> | <u>Total</u> |
| 900 <u>Other Uses of Funds</u> | | | | |
| 932 Capital Reserve Fund Transfers Applicable To Fund 32 | | | | 150,000.00 |
| Total Other Uses of Funds | | | | \$150,000.00 |
| Total 5230 Capital Projects Fund Transfers | | | | \$150,000.00 |

LEA : 122097203 Morrisville Borough SD

Printed 1/27/2020 4:05:25 PM

| | |
|---|--------------|
| Capital Reserve Fund - § 1431 (32) | |
| 2000 Support Services | <u>Total</u> |
| 700 <u>Property</u> | |
| 752 Capital Equipment – Original and Additional | 339,657.00 |
| Total Property | \$339,657.00 |
| Total 2000 Support Services | \$339,657.00 |

LEA : 122097203 Morrisville Borough SD

Printed 1/27/2020 4:05:25 PM

Capital Reserve Fund - § 1431 (32)

2600 Operation and Maintenance of Plant Services

Elementary

Secondary

Federal

Total

700 Property

752 Capital Equipment – Original and Additional

339,657.00

| | | | | |
|---|--|--|--|---------------------|
| Total Property | | | | \$339,657.00 |
| Total 2600 Operation and Maintenance of Plant Services | | | | \$339,657.00 |

LEA : 122097203 Morrisville Borough SD

Printed 1/27/2020 4:05:25 PM

Capital Reserve Fund - § 1431 (32)

| 2650 Vehicle Operation and Maintenance Services (Other Than Student Transportation Vehicles) | <u>Elementary</u> | <u>Secondary</u> | <u>Federal</u> | <u>Total</u> |
|--|-------------------|------------------|----------------|--------------|
| 700 <u>Property</u> | | | | |
| 752 Capital Equipment – Original and Additional | | | | 339,657.00 |
| Total Property | | | | \$339,657.00 |
| Total 2650 Vehicle Operation and Maintenance Services (Other Than Student Transportation Vehicles) | | | | \$339,657.00 |

LEA : 122097203 Morrisville Borough SD

Printed 1/27/2020 4:05:26 PM

Other Capital Projects Fund (39)

2000 Support Services

Total

700 Property

752 Capital Equipment – Original and Additional

17,287.00

Total Property

\$17,287.00

Total 2000 Support Services

\$17,287.00

LEA : 122097203 Morrisville Borough SD

Printed 1/27/2020 4:05:26 PM

Other Capital Projects Fund (39)

| | | | | |
|--|-------------------|------------------|----------------|--------------|
| 2600 Operation and Maintenance of Plant Services | <u>Elementary</u> | <u>Secondary</u> | <u>Federal</u> | <u>Total</u> |
| 700 <u>Property</u> | | | | |
| 752 Capital Equipment – Original and Additional | | | | 17,287.00 |
| Total Property | | | | \$17,287.00 |
| Total 2600 Operation and Maintenance of Plant Services | | | | \$17,287.00 |

LEA : 122097203 Morrisville Borough SD

Printed 1/27/2020 4:05:26 PM

Other Capital Projects Fund (39)

| | | | | |
|--|-------------------|------------------|----------------|--------------|
| 2650 Vehicle Operation and Maintenance Services (Other Than Student Transportation Vehicles) | <u>Elementary</u> | <u>Secondary</u> | <u>Federal</u> | <u>Total</u> |
| 700 <u>Property</u> | | | | |
| 752 Capital Equipment – Original and Additional | | | | 17,287.00 |
| Total Property | | | | \$17,287.00 |
| Total 2650 Vehicle Operation and Maintenance Services (Other Than Student Transportation Vehicles) | | | | \$17,287.00 |

LEA : 122097203 Morrisville Borough SD

Printed 1/27/2020 4:05:31 PM

Other Capital Projects Fund (39)

4000 Facilities Acquisition, Construction and Improvement Services

Total

300 Purchased Professional and Technical Services

| | |
|--|----------------|
| 330 Other Professional Services | 2,914,157.00 |
| Total Purchased Professional and Technical Services | \$2,914,157.00 |
| Total 4000 Facilities Acquisition, Construction and Improvement Services | \$2,914,157.00 |

LEA : 122097203 Morrisville Borough SD

Printed 1/27/2020 4:05:31 PM

Other Capital Projects Fund (39)

| | | | | |
|--|-------------------|------------------|----------------|----------------|
| 4400 Architecture and Engineering Services / Educational Specifications – Improvements | <u>Elementary</u> | <u>Secondary</u> | <u>Federal</u> | <u>Total</u> |
| 300 <u>Purchased Professional and Technical Services</u> | | | | |
| 330 Other Professional Services | | | | 2,914,157.00 |
| Total Purchased Professional and Technical Services | | | | \$2,914,157.00 |
| Total 4400 Architecture and Engineering Services / Educational Specifications – Improvements | | | | \$2,914,157.00 |

LEA : 122097203 Morrisville Borough SD

Printed 1/27/2020 4:05:36 PM

Other Capital Projects Fund (39)

5000 Other Expenditures and Financing Uses

Total

| | |
|--|--------------|
| 800 <u>Other Objects</u> | |
| 830 Interest | 107,419.00 |
| Total Other Objects | \$107,419.00 |
| Total 5000 Other Expenditures and Financing Uses | \$107,419.00 |

LEA : 122097203 Morrisville Borough SD

Printed 1/27/2020 4:05:36 PM

Other Capital Projects Fund (39)

| | | | | |
|---|-------------------|------------------|----------------|--------------|
| 5100 Debt Service / Other Expenditures and Financing Uses | <u>Elementary</u> | <u>Secondary</u> | <u>Federal</u> | <u>Total</u> |
| 800 <u>Other Objects</u> | | | | |
| 830 Interest | | | | 107,419.00 |
| Total Other Objects | | | | \$107,419.00 |
| Total 5100 Debt Service / Other Expenditures and Financing Uses | | | | \$107,419.00 |

LEA : 122097203 Morrisville Borough SD

Printed 1/27/2020 4:05:36 PM

Other Capital Projects Fund (39)

| | | | | |
|--------------------------|-------------------|------------------|----------------|--------------|
| 5110 Debt Service | <u>Elementary</u> | <u>Secondary</u> | <u>Federal</u> | <u>Total</u> |
| 800 <u>Other Objects</u> | | | | |
| 830 Interest | | | | 107,419.00 |
| Total Other Objects | | | | \$107,419.00 |
| Total 5110 Debt Service | | | | \$107,419.00 |

LEA : 122097203 Morrisville Borough SD

Printed 1/27/2020 4:05:46 PM

| | <u>General Fund(10)</u> | <u>Public Purpose Trust(27)</u> | <u>Other Compt Approved</u> <u>(28)</u> | <u>Athletic / Activity(29)</u> | <u>Capital Reserve (690.</u> <u>1850)(31)</u> |
|---|-------------------------|---------------------------------|--|--------------------------------|--|
| 1000 <u>Instruction</u> | | | | | |
| 1100 Regular Programs - Elementary / Secondary | 8,060,688.00 | | | | |
| 1200 Special Programs - Elementary / Secondary | 6,476,983.00 | | | | |
| 1300 Vocational Education | 790,034.00 | | | | |
| 1400 Other Instructional Programs - Elementary / Secondary | 6,258.00 | | | | |
| 1500 Nonpublic School Programs | 9,381.00 | | | | |
| 1800 Pre-Kindergarten | 73,789.00 | | | | |
| Total Instruction | \$15,417,133.00 | | | | |
| 2000 <u>Support Services</u> | | | | | |
| 2100 Support Services - Students | 1,009,081.00 | | | | |
| 2200 Support Services - Instructional Staff | 301,759.00 | | | | |
| 2300 Support Services - Administration | 1,316,770.00 | | | | |
| 2400 Support Services - Pupil Health | 309,680.00 | | | | |
| 2500 Support Services - Business | 517,545.00 | | | | |
| 2600 Operation and Maintenance of Plant Services | 1,525,126.00 | | | | |
| 2700 Student Transportation Services | 604,498.00 | | | | |
| 2800 Support Services - Central | 451,076.00 | | | | |
| 2900 Other Support Services | 50,281.00 | | | | |
| Total Support Services | \$6,085,816.00 | | | | |
| 3000 <u>Operation of Non-Instructional Services</u> | | | | | |
| 3200 Student Activities | 403,450.00 | | | | |
| 3300 Community Services | 68,822.00 | | | | |
| Total Operation of Non-Instructional Services | \$472,272.00 | | | | |
| 4000 <u>Facilities Acquisition, Construction and Improvement Services</u> | | | | | |
| 4400 Architecture and Engineering Services / Educational Specifications - Improvements | | | | | |
| Total Facilities Acquisition, Construction and Improvement | | | | | |
| 5000 <u>Other Expenditures and Financing Uses</u> | | | | | |
| 5100 Debt Service / Other Expenditures and Financing Uses | 953,773.00 | | | | |
| 5200 Interfund Transfers - Out | 150,000.00 | | | | |
| Total Other Expenditures and Financing Uses | \$1,103,773.00 | | | | |
| TOTAL ACTUAL EXPENDITURES & OTHER FINANCING USES | \$23,078,994.00 | | | | |

LEA : 122097203 Morrisville Borough SD

Printed 1/27/2020 4:05:46 PM

| | <u>Capital Reserve (1431)(32)</u> | <u>Other Capital Projects Fund(39)</u> | <u>Debt Service(40)</u> | <u>Permanent(90)</u> | <u>Total</u> |
|--|-----------------------------------|--|-------------------------|----------------------|------------------------|
| 1000 <u>Instruction</u> | | | | | |
| 1100 Regular Programs - Elementary / Secondary | | | | | 8,060,688.00 |
| 1200 Special Programs - Elementary / Secondary | | | | | 6,476,983.00 |
| 1300 Vocational Education | | | | | 790,034.00 |
| 1400 Other Instructional Programs - Elementary / Secondary | | | | | 6,258.00 |
| 1500 Nonpublic School Programs | | | | | 9,381.00 |
| 1800 Pre-Kindergarten | | | | | 73,789.00 |
| Total Instruction | | | | | \$15,417,133.00 |
| 2000 <u>Support Services</u> | | | | | |
| 2100 Support Services - Students | | | | | 1,009,081.00 |
| 2200 Support Services - Instructional Staff | | | | | 301,759.00 |
| 2300 Support Services - Administration | | | | | 1,316,770.00 |
| 2400 Support Services - Pupil Health | | | | | 309,680.00 |
| 2500 Support Services - Business | | | | | 517,545.00 |
| 2600 Operation and Maintenance of Plant Services | 339,657.00 | 17,287.00 | | | 1,882,070.00 |
| 2700 Student Transportation Services | | | | | 604,498.00 |
| 2800 Support Services - Central | | | | | 451,076.00 |
| 2900 Other Support Services | | | | | 50,281.00 |
| Total Support Services | \$339,657.00 | \$17,287.00 | | | \$6,442,760.00 |
| 3000 <u>Operation of Non-Instructional Services</u> | | | | | |
| 3200 Student Activities | | | | | 403,450.00 |
| 3300 Community Services | | | | | 68,822.00 |
| Total Operation of Non-Instructional Services | | | | | \$472,272.00 |
| 4000 <u>Facilities Acquisition, Construction and Improvement Services</u> | | | | | |
| 4400 Architecture and Engineering Services / Educational Specifications - Improvements | | 2,914,157.00 | | | 2,914,157.00 |
| Total Facilities Acquisition, Construction and Improvement | | \$2,914,157.00 | | | \$2,914,157.00 |
| 5000 <u>Other Expenditures and Financing Uses</u> | | | | | |
| 5100 Debt Service / Other Expenditures and Financing Uses | | 107,419.00 | | | 1,061,192.00 |
| 5200 Interfund Transfers - Out | | | | | 150,000.00 |
| Total Other Expenditures and Financing Uses | | \$107,419.00 | | | \$1,211,192.00 |
| TOTAL ACTUAL EXPENDITURES & OTHER FINANCING USES | \$339,657.00 | \$3,038,863.00 | | | \$26,457,514.00 |

LEA : 122097203 Morrisville Borough SD

Printed 1/27/2020 4:05:52 PM

PSERS Salary Data (Salary Data should relate to the General Fund only)

| Amount | Description | Amount |
|--------|--|--------------|
| | Total Salary Base for salaries subject to PSERS withholding | 8,015,893.00 |
| | Total Federally Funded salaries subject to PSERS withholding | 691,901.00 |
| | | |

Title I Expenditure Data

| Amount | Description | Amount |
|--------------------------------|---|--------------|
| | Expenditures Funded with Current Title I Funds | 236,532.00 |
| | Expenditures Funded with Carry over Title I Funds | |
| | | |
| Total Title I Expenditure Data | | \$236,532.00 |

Benefits for Staff Relative to Collective Bargaining Agreements

| | OBJECT | COVERED | NOT COVERED | TOTAL |
|--------------------------|--|----------------|-------------|----------------|
| 10 General Fund | | | | |
| | 211 Medical Insurance | | | |
| | 212 Dental Insurance | | | |
| | 215 Eye Care Insurance | | | |
| | 216 Prescription Insurance | | | |
| | 271 Self-Insurance Medical Benefits | 1,780,478.00 | 36,336.00 | 1,816,814.00 |
| | 272 Self-Insurance Dental Benefits | | | |
| | 275 Self-Insurance Eye Care Benefits | | | |
| | 276 Self-Insurance Prescription Benefits | | | |
| | FUND TOTAL | \$1,780,478.00 | \$36,336.00 | \$1,816,814.00 |
| 50 Enterprise Fund | No Self Insurance data to report | | | |
| | 211 Medical Insurance | | | |
| | 212 Dental Insurance | | | |
| | 215 Eye Care Insurance | | | |
| | 216 Prescription Insurance | | | |
| | 271 Self-Insurance Medical Benefits | | | |
| | 272 Self-Insurance Dental Benefits | | | |
| | 275 Self-Insurance Eye Care Benefits | | | |
| | 276 Self-Insurance Prescription Benefits | | | |
| | FUND TOTAL | | | |
| 60 Internal Service Fund | | | | |
| | 211 Medical Insurance | | | |
| | 212 Dental Insurance | | | |
| | 215 Eye Care Insurance | | | |
| | 216 Prescription Insurance | | | |
| | 271 Self-Insurance Medical Benefits | 1,089,949.00 | 22,244.00 | 1,112,193.00 |
| | 272 Self-Insurance Dental Benefits | | | |
| | 275 Self-Insurance Eye Care Benefits | | | |
| | 276 Self-Insurance Prescription Benefits | | | |
| | FUND TOTAL | \$1,089,949.00 | \$22,244.00 | \$1,112,193.00 |
| Total of All Funds | | \$2,870,427.00 | \$58,580.00 | \$2,929,007.00 |

LEA : 122097203 Morrisville Borough SD

Printed 1/27/2020 4:05:57 PM

| Function | Special Education (Prior Year) | Nonspecial Education (Prior Year) | Total (Prior Year) | Special Education (Current Year) | Nonspecial Education (Current Year) | Total (Current Year) |
|--|-----------------------------------|--------------------------------------|--------------------|-------------------------------------|--|----------------------|
| 2120 Guidance Services | 113,039.00 | 365,116.00 | 478,155.00 | 120,070.00 | 396,780.00 | 516,850.00 |
| 2140 Psychological Services | 24,617.00 | 79,511.00 | 104,128.00 | 40,467.00 | 133,725.00 | 174,192.00 |
| 2150 Speech Pathology and Audiology Services | | | | | | |
| 2160 Social Work Services | | | | | | |
| 2260 Instruction and Curriculum Development Services | 5,386.00 | 17,396.00 | 22,782.00 | 33,490.00 | 110,668.00 | 144,158.00 |
| 2350 Legal and Accounting Services | 36,080.00 | 116,538.00 | 152,618.00 | 32,108.00 | 106,102.00 | 138,210.00 |
| 2420 Medical Services | 1,067.00 | 3,448.00 | 4,515.00 | 27,572.00 | 91,112.00 | 118,684.00 |
| 2440 Nursing Services | 42,631.00 | 137,698.00 | 180,329.00 | 43,906.00 | 145,090.00 | 188,996.00 |
| 2700 Student Transportation Services | 108,078.00 | 349,091.00 | 457,169.00 | 140,432.00 | 464,066.00 | 604,498.00 |
| Total | \$330,898.00 | \$1,068,798.00 | \$1,399,696.00 | \$438,045.00 | \$1,447,543.00 | \$1,885,588.00 |

LEA : 122097203 Morrisville Borough SD

Printed 1/27/2020 4:06:00 PM

(PRINCIPAL AMOUNTS ONLY)

GOVERNMENTAL FUNDS/ ACTIVITIES

| | Short-Term Borrowing | General Obligation Bonds/Notes | Authority Building Obligations | Other Long-Term Debt | Other Post- Employment Benefits (OPEB) | Compensated Absences | Net Pension Liability | Total |
|---|-------------------------|--------------------------------------|-----------------------------------|-------------------------|--|-------------------------|--------------------------|---------------|
| 1. Debt at Beginning of Fiscal Year | | 11,618,000.00 | 82,442.00 | 187,600.00 | 1,561,642.00 | 313,660.00 | 27,509,342.00 | 41,272,686.00 |
| 2. Additional Debt Incurred During Year | | | | | 68,295.00 | | 285,533.00 | 353,828.00 |
| 3. Retirements and Repayments | | 660,000.00 | 82,442.00 | 119,400.00 | | 68,486.00 | | 930,328.00 |
| 4. Debt at End of Fiscal Year | | 10,958,000.00 | | 68,200.00 | 1,629,937.00 | 245,174.00 | 27,794,875.00 | 40,696,186.00 |
| 5. Accreted Interest at End Of Fiscal Year | | | | | | | | |
| 6. Total Debt and Accreted Interest | | 10,958,000.00 | | 68,200.00 | 1,629,937.00 | 245,174.00 | 27,794,875.00 | 40,696,186.00 |
| 7. Current Portion P&I - Due within 1 year | | 914,655.00 | | 68,200.00 | | | | 982,855.00 |
| 8. Interest Paid during current fiscal year | | 318,232.00 | 1,426.00 | 1.00 | | | | 319,659.00 |

(PRINCIPAL AMOUNTS ONLY)

PROPRIETARY FUNDS

- 1. Debt at Beginning of Fiscal Year
- 2. Additional Debt Incurred During Year
- 3. Retirements and Repayments
- 4. Debt at End of Fiscal Year
- 5. Accreted Interest at End Of Fiscal Year
- 6. Total Debt and Accreted Interest
- 7. Current Portion P&I - Due within 1 year
- 8. Interest Paid during current fiscal year

LEA : 122097203 Morrisville Borough SD

Printed 1/27/2020 4:06:00 PM

Total Principal and Interest Payments Made by Your School - All Funds

| Function | Fund | | Principal (910) | Principal (920) | Interest (830) | Total (Principal +Interest) | Misc Other Uses (990) |
|--|------|------------------------|-----------------|-----------------|----------------|-----------------------------|-----------------------|
| 5110 | 10 | General Fund | 660,000.00 | 82,442.00 | 211,331.00 | 953,773.00 | |
| 5110 | 20 | Special Revenue Funds | | | | | |
| 5110 | 30 | Capital Projects Funds | | | 107,419.00 | 107,419.00 | |
| 5110 | 40 | Debt Service Fund | | | | | |
| 5110 | 90 | Permanent Fund | | | | | |
| 5120 | 10 | General Fund | | | | | |
| 5120 | 20 | Special Revenue Funds | | | | | |
| 5120 | 30 | Capital Projects Funds | | | | | |
| 5120 | 40 | Debt Service Fund | | | | | |
| Total Debt Payments - Governmental Funds | | | \$660,000.00 | \$82,442.00 | \$318,750.00 | \$1,061,192.00 | |

| Function | Fund | | Principal (910) | Principal (920) | Interest (830) | Total (Principal +Interest) |
|---|------|-----------------------|-----------------|-----------------|----------------|-----------------------------|
| 5110 | 50 | Enterprise Fund | | | | |
| 5110 | 60 | Internal Service Fund | | | | |
| 5120 | 50 | Enterprise Fund | | | | |
| 5120 | 60 | Internal Service Fund | | | | |
| Total Debt Payments - Proprietary Funds | | | | | | |

LEA : 122097203 Morrisville Borough SD

Printed 1/27/2020 4:06:00 PM

Debt Details
Governmental Funds/ Activities

| Debt Category | Debt Issue Date (MM/YYYY) | Principal Amounts Only | | | | Current Portion Due Within One Year (Principal and Interest) | Interest Paid During Fiscal Year |
|---------------------------------------|------------------------------|----------------------------------|--------------|-------------------------|----------------------------|--|----------------------------------|
| | | Debt at Beginning of Fiscal Year | Additions | Reductions / Repayments | Debt at End of Fiscal Year | | |
| General Obligation Bonds/Notes – CIB | 12/2017 | 7,125,000.00 | | 5,000.00 | 7,120,000.00 | 219,838.00 | 214,838.00 |
| General Obligation Bonds/Notes – CIB | 11/2014 | 3,855,000.00 | | 455,000.00 | 3,400,000.00 | 539,681.00 | 83,881.00 |
| General Obligation Bonds/Notes – CIB | 09/2011 | 67,000.00 | | 67,000.00 | | | 267.00 |
| General Obligation Bonds/Notes – CIB | 10/2001 | 571,000.00 | | 133,000.00 | 438,000.00 | 155,136.00 | 19,246.00 |
| Authority Building Obligations – CIB | 11/2011 | 82,442.00 | | 82,442.00 | | | 1,426.00 |
| Other Long Term Debt/Liabilities | | 187,600.00 | | 119,400.00 | 68,200.00 | 68,200.00 | 1.00 |
| Compensated Absences | | 313,660.00 | | 68,486.00 | 245,174.00 | | |
| Other Post-Employment Benefits (OPEB) | | 1,561,642.00 | 68,295.00 | | 1,629,937.00 | | |
| Net Pension Liability | | 27,509,342.00 | 285,533.00 | | 27,794,875.00 | | |
| Totals for Debt Entered: | | \$41,272,686.00 | \$353,828.00 | \$930,328.00 | \$40,696,186.00 | \$982,855.00 | \$319,659.00 |

LEA : 122097203 Morrisville Borough SD

Printed 1/27/2020 4:06:02 PM

General Fund (10)

Section 1: Tuition/Purchased Services as Reported within Expenditure Detail

| | Amount |
|---|-----------------------|
| Tuition Reported in General Fund Expenditures 1000-560 | 2,794,312.00 |
| Purchased Services in General Fund Expenditures 1000-594 and 1000-597 | |
| Section 1 Total | \$2,794,312.00 |

Section 2: Tuition Paid to Institution Types During Fiscal Year

| | Tuition Paid For Nonspecial Education | Tuition Paid For Special Education | Total |
|---|--|---------------------------------------|-----------------------|
| 1 1306 Institutions | | | |
| 2 Institutionalized Children's Programs | | | |
| 3 Juveniles Incarcerated in Adult Facilities | | | |
| 4 Residential Treatment Facilities | | | |
| 5 Other Local Education Agencies | 10,050.00 | 822,765.00 | 832,815.00 |
| 6 Brick and Mortar Charter Schools | 368,676.00 | 106,244.00 | 474,920.00 |
| 7 Cyber Charter Schools | 526,061.00 | 8,426.00 | 534,487.00 |
| 8 Career and Technology Centers | 715,554.00 | | 715,554.00 |
| 9 Approved Private Schools | | 138,427.00 | 138,427.00 |
| 10 PA Chartered Schools for the Deaf and Blind | | 98,109.00 | 98,109.00 |
| 11 Private Residential Rehabilitative Institutions | | | |
| 12 Juvenile Detention Centers | | | |
| 13 Special Program Jointures | | | |
| 14 Other Tuition Not Included Elsewhere In This Section | | | |
| Section 2 Total | \$1,620,341.00 | \$1,173,971.00 | \$2,794,312.00 |

LEA : 122097203 Morrisville Borough SD

Printed 1/27/2020 4:06:07 PM

Food Service / Cafeteria Operations Fund (51)

| | | <u>Total</u> |
|---|--|---------------------|
| 3000 Operation of Non-Instructional Services | | |
| 500 | <u>Other Purchased Services</u> | |
| 520 | Insurance – General | 28,936.00 |
| 570 | Food Service Management | 243,680.00 |
| Total Other Purchased Services | | \$272,616.00 |
| 600 | <u>Supplies</u> | |
| 610 | General Supplies | 1,311.00 |
| 630 | Food | 191,429.00 |
| Total Supplies | | \$192,740.00 |
| 700 | <u>Property</u> | |
| 740 | Depreciation | 2,203.00 |
| Total Property | | \$2,203.00 |
| 800 | <u>Other Objects</u> | |
| 810 | Dues and Fees | 160.00 |
| Total Other Objects | | \$160.00 |
| Total 3000 Operation of Non-Instructional Services | | \$467,719.00 |

LEA : 122097203 Morrisville Borough SD

Printed 1/27/2020 4:06:07 PM

Food Service / Cafeteria Operations Fund (51)

| 3100 Food Services | <u>Elementary</u> | <u>Secondary</u> | <u>Federal</u> | <u>Total</u> |
|-------------------------------------|-------------------|------------------|----------------|--------------|
| 500 <u>Other Purchased Services</u> | | | | |
| 520 Insurance – General | | | | 28,936.00 |
| 570 Food Service Management | | | | 243,680.00 |
| Total Other Purchased Services | | | | \$272,616.00 |
| 600 <u>Supplies</u> | | | | |
| 610 General Supplies | | | | 1,311.00 |
| 630 Food | | | | 191,429.00 |
| Total Supplies | | | | \$192,740.00 |
| 700 <u>Property</u> | | | | |
| 740 Depreciation | | | | 2,203.00 |
| Total Property | | | | \$2,203.00 |
| 800 <u>Other Objects</u> | | | | |
| 810 Dues and Fees | | | | 160.00 |
| Total Other Objects | | | | \$160.00 |
| Total 3100 Food Services | | | | \$467,719.00 |

LEA : 122097203 Morrisville Borough SD

Printed 1/27/2020 4:06:05 PM

Internal Service Fund (60)

2000 Support Services

Total

| | |
|---|-----------------------|
| 200 <u>Personnel Services – Employee Benefits</u> | |
| 270 Group Insurance – Self-Insurance | 1,112,193.00 |
| Total Personnel Services – Employee Benefits | \$1,112,193.00 |
| Total 2000 Support Services | \$1,112,193.00 |

LEA : 122097203 Morrisville Borough SD

Printed 1/27/2020 4:06:05 PM

| | | | | |
|---|-------------------|------------------|----------------|----------------|
| Internal Service Fund (60) | | | | |
| 2300 Support Services – Administration | <u>Elementary</u> | <u>Secondary</u> | <u>Federal</u> | <u>Total</u> |
| 200 <u>Personnel Services – Employee Benefits</u> | | | | |
| 270 Group Insurance – Self-Insurance | | | | 1,112,193.00 |
| Total Personnel Services – Employee Benefits | | | | \$1,112,193.00 |
| Total 2300 Support Services – Administration | | | | \$1,112,193.00 |

LEA : 122097203 Morrisville Borough SD

Printed 1/27/2020 4:06:05 PM

Internal Service Fund (60)

2390 Other Administration Services

| | <u>Elementary</u> | <u>Secondary</u> | <u>Federal</u> | <u>Total</u> |
|---|-------------------|------------------|----------------|-----------------------|
| 200 <u>Personnel Services – Employee Benefits</u> | | | | |
| 270 Group Insurance – Self-Insurance | | | | 1,112,193.00 |
| Total Personnel Services – Employee Benefits | | | | \$1,112,193.00 |
| Total 2390 Other Administration Services | | | | \$1,112,193.00 |

| | <u>Food Service(51)</u> | <u>Child Care Operations(52)</u> | <u>Other Enterprise(58)</u> | <u>Internal Service(60)</u> | <u>Total</u> |
|---|-------------------------|----------------------------------|-----------------------------|-----------------------------|-----------------------|
| 2000 <u>Support Services</u> | | | | | |
| 2300 Support Services - Administration | | | | 1,112,193.00 | 1,112,193.00 |
| Total Support Services | | | | \$1,112,193.00 | \$1,112,193.00 |
| 3000 <u>Operation of Non-Instructional Services</u> | | | | | |
| 3100 Food Services | 467,719.00 | | | | 467,719.00 |
| Total Operation of Non-Instructional Services | \$467,719.00 | | | | \$467,719.00 |
| TOTAL ACTUAL EXPENDITURES & OTHER FINANCING USES | \$467,719.00 | | | \$1,112,193.00 | \$1,579,912.00 |

LEA : 122097203 Morrisville Borough SD

Printed 1/27/2020 4:06:17 PM

| Fund | School | School Number | Local Personnel | Local Nonpersonnel | State Personnel | State Nonpersonnel | Federal Personnel | Federal Nonpersonnel | Total | Explanation |
|-------|------------------------------|---------------|-----------------|--------------------|-----------------|--------------------|-------------------|----------------------|---------------|-------------|
| 10 | | | | | | | | | | |
| | Grandview El Sch | 8112 | 2,924,396.00 | 399,040.00 | 1,561,447.00 | 213,063.00 | 326,547.00 | 44,558.00 | 5,469,051.00 | |
| | Morrisville HS | 8381 | 2,690,713.00 | 334,199.00 | 1,436,675.00 | 178,442.00 | 300,453.00 | 37,318.00 | 4,977,800.00 | |
| | Morrisville Intermediate Sch | 8380 | 2,896,457.00 | 797,741.00 | 1,546,529.00 | 425,945.00 | 323,427.00 | 89,078.00 | 6,079,177.00 | |
| Total | | | 8,511,566.00 | 1,530,980.00 | 4,544,651.00 | 817,450.00 | 950,427.00 | 170,954.00 | 16,526,028.00 | |